



SIS - Standardiseringskommissionen i Sverige

SVENSK STANDARD SS-ISO 8984-1

Handläggande organ

SMS, SVERIGES MEKANSTANDARDISERING

Fastställt

1989-12-06

Utgåva

1

Sida

1 (7)

Registrering

SMS reg 462.4922

SIS FASTSTÄLLER OCH UTGER SVENSK STANDARD SAMT SÄLJER NATIONELLA OCH INTERNATIONELLA STANDARDPUBLIKATIONER ©

Vägfordon – Dieselmotorer – Provning av insprutare – Del 1: Manuell provnings- och inställningsapparat

Road vehicles – Testing of fuel injectors for compression-ignition engines – Part 1: Hand-lever-operated testing and setting apparatus

Denna standard utgörs av den engelska versionen av den internationella standarden ISO 8984-1:1987.

This Swedish standard consists of the English version of the International Standard ISO 8984-1:1987.

Användare av denna standard bör uppmärksamma att internationella standarder ibland revideras och att varje referens till annan internationell standard innebär referens till dess senaste utgåva, om inget annat bestämts.

Users should note that all International Standards undergo revision from time to time and that any reference made herein to any other International Standard implies its latest edition, unless otherwise stated.

Följande dokument, som åberopas i denna standard, är överförda till svenska standarder:

The following documents, referred to in this standard, have been adopted in Swedish standards:

- ISO 2974:1974 = SMS-ISO 2974, utg 1 (SMS reg 462.443), Bilar – Dieselmotorer – Anslutningar för högtrycksrör, 60° invändig kona, E
- ISO 4008-1:1980 = SS-ISO 4008-1, utg 2 (SMS reg 462.493), Bilar – Dieselmotorer – Provning av insprutningspumpar – Del 1: Dynamiska förhållanden, E
- ISO 4008-2:1983 = SS-ISO 4008-2, utg 1 (SMS reg 462.4933), Bilar – Dieselmotorer – Provning av insprutningspumpar – Del 2: Statiska förhållanden, E
- ISO 4010:1977 = SMS-ISO 4010, utg 1 (SMS reg 462.495), Bilar – Dieselmotorer – Kalibreringsmunstycke för pumpprovbank, E
- ISO 4020-2:1979 = SS-ISO 4020-2, utg 1 (SMS reg 462.425), Bilar – Bränslefilter för motorer med kompressionständning – Del 2: Provningsvärden och klassificering, E
- ISO 4113:1988 = SS-ISO 4113, utg 2 (SMS reg 462.496), Vägfordon – Dieselmotorer – Kalibreringsvätska för insprutningsutrustning, E
- ISO 7440-1:1985 = SS-ISO 7440-1, utg 1 (SMS reg 462.4952), Vägfordon – Provning av insprutningssystem – Spridare och hållare för kalibreringsändamål, E
- ISO 7876-1:1984 = SS-ISO 7876-1, utg 1 (SMS reg 462.4305), Bilar – Insprutningssystem – Engelsk och fransk terminologi – Insprutningspumpar, E + F
- ISO 8984-2:1987 = SS-ISO 8984-2, utg 1 (SMS reg 462.4924), Vägfordon – Dieselmotorer – Provning av insprutare – Del 2: Provningsmetoder, E

E betecknar engelsk text, F fransk.

E indicates English, F French text.

UDK 629.11:621.43.038:53.08

Standarder kan beställas hos SIS som även lämnar allmänna upplysningar om svensk och utländsk standard.
Postadress: SIS, Box 3295, 103 66 STOCKHOLM
Telefon: 08 - 613 52 00. Telefax: 08 - 11 70 35

Upplysningar om sakinhållet i standarden lämnas av SMS.
Telefon: 08 - 783 80 00. Telefax: 08 - 667 85 42

Prisgrupp K

Tryckt i februari 1990

Road vehicles — Testing of fuel injectors for compression-ignition engines —

Part 1 : Hand-lever-operated testing and setting apparatus

0 Introduction

An assessment of the functional performance of individual fuel injectors has proved necessary. A form of hand-lever-operated testing and/or setting equipment for injectors has evolved over the years; it has been found in principle effective and adequate to perform the test. Differences in certain physical values between equipment from different manufacturers and of different designs have however resulted in lack of correlation of results. This International Standard consists of two parts (apparatus and procedure respectively), which together specify the relevant requirements to establish common test conditions.

1 Scope

This part of ISO 8984 specifies minimum requirements for hand-lever-operated testing and setting apparatus to perform certain tests on fuel injectors for compression-ignition engines for road vehicles. These tests are detailed in ISO 8984-2 and are

- nozzle opening pressure;
- chatter (atomization);
- spray pattern;
- seat leakage;
- back-leakage.

This International Standard concerns fuel injectors having a spring-loaded nozzle valve actuated by fuel pressure. It is intended that the specifications form a standard basis. The injector is connected to the apparatus by an adaptor specified by the injector manufacturer.

2 Field of application

2.1 This part of ISO 8984 primarily applies to apparatus for testing the injectors of fuel injection equipment for road vehicle compression-ignition engines requiring fuel delivery of up to 300 mm³/injection/cylinder at full load.

2.2 No distinction is made between apparatus used in different locations, e.g. laboratories, factories or service stations.

2.3 The injector manufacturer shall specify which tests shall be selected from those listed in clause 1, together with any additional requirements for a particular injector.

3 References

ISO 2974, *Road vehicles — High pressure pipe fittings with 60° female cone.*

ISO 4010, *Road vehicles — Calibrating nozzle, delay pintle type.*

ISO 4020-2, *Road vehicles — Fuel filters for automotive compression ignition engines — Part 2 : Test values and classification.*

ISO 4113, *Road vehicles — Calibration fluid for diesel injection equipment.*

ISO 8984-2, *Road vehicles — Testing of fuel injectors for compression-ignition engines — Part 2 : Test procedures.*

4 Mandatory features of equipment

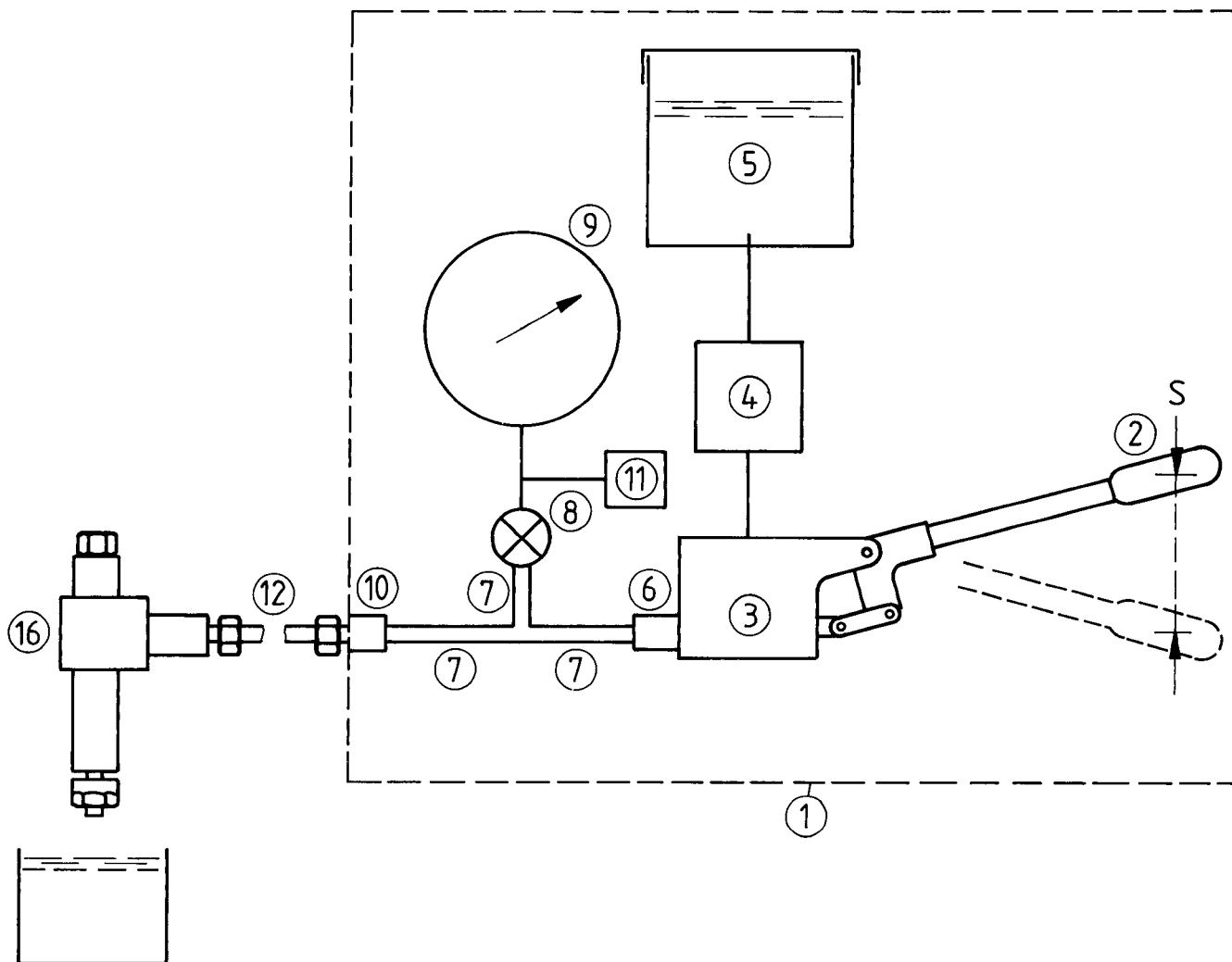


Figure — Mandatory components

4.1 Mandatory components

4.1.1 This part of ISO 8984 covers those components within the dashed line (1) on the figure which comprise

- Operating handle (2)
- Pump (3)
- Filter (4)
- Fluid container and lid (5)
- Non-return valve (6)
- Ducts (7)
- Isolating valve (8)

- Pressure gauge (9)
- Outlet connection (10)
- Variable volume device (11).

4.1.2 Certain components are not covered by this International Standard. They are however essential to testing :

- Adaptor (12)
- Blank (13)¹⁾
- Reference pressure gauge (14)¹⁾
- Volume measuring device (15)¹⁾
- Injector (16).

1) Not illustrated.

4.2 Specification of components

4.2.1 The whole mechanism [within dashed line (1)] shall be of self-contained stiff construction capable of being rigidly mounted; items (4) and (5) may be separate if desired.

4.2.2 The operating handle (2) shall have a vertical plane of action and the line of action, S, drawn between the positions of the centre-point of the hand-grip at extremes of stroke shall be approximately vertical.

4.2.3 The pump (3) shall incorporate a piston and lever system such that the following parameters are achieved.

a) The stroke of the operating handle along the line of action, S, which produces geometric delivery shall be between 125 and 325 mm.

b) Specific delivery (at atmospheric conditions) shall be between 4,5 and 6,0 mm³ per millimetre of stroke along the line of action, S.

c) The hydromechanical stiffness of the apparatus, with the isolating valve (8) closed and the outlet connection (10) closed off, shall not be less than 0,2 MPa/mm (2,0 bar/mm), measured in the range 5 to 35 MPa (50 to 350 bar) and along the line of action, S.

4.2.4 The element of the pump inlet filter (4) shall be replaceable without risk of any foreign matter entering the pump. The element shall meet the requirements of ISO 4020-2, with filter rating number 330000.

4.2.5 The fluid container (5), and filter container (4) where applicable, shall have a smooth and corrosion-resistant internal finish with a sufficiently large opening to give ample access for cleaning. The container lid (and breather) shall prevent ingress of foreign matter.

4.2.6 The pump shall discharge through a non-return valve (6) which seals against return flow and has no unloading feature.

4.2.7 The ducts (7) connecting the non-return valve (6) to the outlet connection (10) and the isolating valve (8) shall be constructed so that at no point is the cross-section less than 2 mm in diameter.

4.2.8 A manually operable isolating valve (8) shall prevent communication with pressure gauge (9) and variable volume device (11), if applicable. It shall be capable of sealing completely in both directions. The valve spindle seal shall be on the pressure gauge side of the sealing interfaces. Change of internal trapped volume due to valve spindle axial movement need not be zero but shall be kept to a minimum.

4.2.9 The pressure gauge (9) (and external damper if fitted) shall be of robust construction with the following specification:

a) Range : 0 (nominal) to $40 + \frac{2}{0}$ MPa ($400 + \frac{20}{0}$ bar).

b) Accuracy in fitted attitude (including hysteresis) : within $\pm 0,6$ % of full-scale deflection from 10 % to 90 %

full-scale deflection. The needle shall lie within 1 to 2 mm in front of a flat scale.

c) Scaling :

— length 300 mm minimum;

— graduation pitch of 0,2 MPa (2 bar) graduation, to commence at approximately 5 % full-scale deflection.

d) Damping characteristic that shall protect the gauge from damaging shocks due to injector action but shall not reduce the rate of response to a step change to less than 90 % in 200 ms.

NOTE — Although this specification describes an analogue-type Bourdon tube pressure gauge, other methods of pressure measurement are acceptable provided they allow equivalent assessment of the injector.

4.2.10 The outlet connection (10) shall be a male connector complying with ISO 2974, with M14 \times 1,5 thread.

4.2.11 A variable volume device (11) shall be included as shown in the figure, to permit compensation of variations in internal volume elasticity of individual pressure gauges. This item may be omitted if the requirements of 4.3 are fulfilled.

4.2.12 The adaptor (12) shall be specified by the injector manufacturer. (It is not covered by this part of ISO 8984.)

4.2.13 A suitable blank (13) to seal the outlet connection (see 4.2.10) from the atmosphere shall not alter the system volume (see note under 4.3.1).

4.2.14 A reference pressure gauge (14) shall be capable of measuring (with or without reference to a test certificate) to an accuracy of at least $\pm 0,2$ % full-scale deflection, over a range similar to that of the apparatus pressure gauge (9).

4.2.15 A suitable means of measuring internal volume (15) is described in the annex; the outlet connection (10) is the feed connection in the annex.

4.3 Additional requirements : internal volume elasticity

4.3.1 The total internal trapped volume of the system (see note) at 23 ± 5 °C shall be such that it releases fluid at the rate of $0,2 \pm 0,005$ mm³/MPa ($2,0 \pm 0,05$ mm³/bar), in the pressure range 10 to 7 MPa (100 to 70 bar) and using ISO 4113 calibration fluid.

NOTE — The system comprises the volume between the sealing face of the non-return valve (6) and the plane of the small end of the cone of the outlet connection (10) including the pressure gauge (9) [and variable volume device (11) if applicable].

4.3.2 With the pressure gauge (9) [and variable volume device (11) if applicable] isolated from the system by closing the valve (8), the remaining trapped volume at 23 ± 5 °C shall be such that it releases fluid at the rate of $0,04 \pm 0,01$ mm³/MPa ($0,4 \pm 0,1$ mm³/bar), in the pressure range 10 to 7 MPa (100 to 70 bar) and using ISO 4113 calibration fluid.

5 Validation

WARNING — The spray from an injector can penetrate human skin. To avoid injury keep clear of the spray.

5.1 Preparation

Fill the system with fluid and then flush it. Fit an injector and operate the pump through at least 10 full strokes after the injector first sprays at its normal opening pressure with the isolating valve open. It is important that any air in the system is expelled or dissolved before commencement of the following validation procedure, for example by maintaining a pressure of 10 MPa (100 bar) for 1 h.

5.2 Tightness of whole system

Fit the blank (13) and operate the pump to raise the pressure to full-scale reading with the isolating valve open. If the gauge reading falls slightly after releasing the handle, it is permissible to re-establish the full-scale reading a sufficient number of times over a period of 30 min to dissolve any remaining free air into the fluid.

Then release the handle : the gauge reading shall not fall more quickly than 0,1 MPa/min (1 bar/min).

5.3 Pump plunger (and inlet valve or port) leakage

Apply the load necessary to produce a full-scale reading. Release the blank and allow the gauge reading to fall to zero. Retighten the blank, lift the handle fully and apply the same load again.

The handle shall not fall at a rate greater than 10 mm/min measured along the line of action, S (see 4.2.2).

5.4 Leakage of gauge isolation valve and non-return valve

Replace the blank (13) with a certified reference pressure gauge (14).

NOTE — In fitting the reference gauge, a short length of steel pipe (6 mm outer diameter, 2 mm bore) may be used to permit it to be set at its correct attitude. This pipe should first be fitted to the outlet connection (10) and purged of air before fitting the gauge.

Close the gauge isolating valve (8). Raise the pressure to the full-scale value and release the handle. If the gauge reading falls slightly after releasing the handle, it is permissible to re-establish the full-scale reading a sufficient number of times over a period of 30 min to dissolve any remaining free air into the fluid.

The reference gauge reading shall not fall by more than 0,1 MPa/min (1 bar/min) and the apparatus gauge reading shall not rise at all.

5.5 Gauge integrity

Open the gauge isolating valve (8) and release and retighten the reference gauge fitting. Raise and lower the pressure in small increments and compare gauge readings throughout the range.

The apparatus shall meet the requirements of 4.2.9.

5.6 Internal volume elasticity using volume measuring device (15)

5.6.1 Check that the total internal elasticity with the isolating valve open, e_3 , conforms to the values specified in 4.3.1. Record this value.

5.6.2 With the pressure gauge and variable volume device (if applicable) isolated from the system, check that the internal volume elasticity, e_c , conforms to the value specified in 4.3.2. The following method may be used.

5.6.2.1 Fit the reference gauge used in 5.4 to one leg of a 'T' piece. Fit the second leg to the outlet connection (10) and the volume measuring device (15) to the third leg.

5.6.2.2 Measure the volume elasticity of the whole system with the isolating valve (8) open, e_1 , and including the reference gauge.

5.6.2.3 Measure the volume elasticity with the isolating valve (8) closed, e_2 , using the reference gauge to indicate the pressure change.

5.6.2.4 Deduce the value of the internal volume elasticity, e_c , in cubic millimetres per megapascal (per bar) using the value for e_3 recorded in 5.6.1, with the equation :

$$e_c = e_2 + e_3 - e_1$$

5.7 Hydromechanical stiffness

With the isolating valve (8) open, and a blank (13) fitted to the outlet connection (10), apply a load of 50 N to the handle (2) and record the pressure, p_1 . Increase the load to 150 N and record the pressure, p_2 . Release the handle (2), release and retighten the blank (13), close the isolating valve (8) and record the vertical movement of the handle S_d along the line of action, S, as the load applied to the handle is increased from 50 to 150 N. The hydromechanical stiffness, in megapascals (bars) per millimetre, is then determined as follows :

$$\text{Stiffness} = \frac{p_2 - p_1}{S_d}$$

5.8 Function

Fit the previously validated calibrating injector fitted with pintle nozzle complying with ISO 4010. The apparatus shall perform all tests listed in clause 1, and detailed in ISO 8984-2.

6 Information to be supplied by manufacturer

6.1 With the apparatus, the test equipment manufacturer shall provide proper organization, installation and maintenance instructions in conformity with this part of ISO 8984, including the specific values required in 4.2.3 a) and b).

6.2 The fuel injector manufacturer shall state the applicable tests as detailed in ISO 8984-2 in test instructions for a particular fuel injector or range of fuel injectors.

7 Maintenance

Certain validation tests shall be carried out periodically to ensure functional conformity of the equipment with this part of ISO 8984. In the absence of specific instructions by the apparatus manufacturer, the tests detailed in the table shall be applied.

Table – List of validation tests to be performed on the apparatus as part of a maintenance schedule

Test	Interval	Special apparatus
Preparation of the equipment (see 5.1)	Prior to all validation tests	Injector (any)
Tightness of whole system (see 5.2)	Every 6 months	Blank (13)
Pump plunger (and inlet valve or port) leakage (see 5.3)	Every 6 months	Blank (13)
Leakage of gauge isolation valve and non-return valve (see 5.4)	Every 3 months	Reference pressure gauge (14)
Gauge integrity ¹⁾ (see 5.5)	Every 3 months	Reference pressure gauge (14)
Internal volume elasticity ¹⁾ (see 5.6)	As detailed by the manufacturer	Reference pressure gauge (14) and volume measuring device (15)

1) Replacement of the pressure gauge is likely to change the internal volume elasticity (see 4.3.1) of the apparatus significantly, with a detrimental effect on the back-leakage test. The equipment manufacturer shall indicate whether the internal volume elasticity should be checked and if the variable volume device (if applicable) requires adjustment to achieve the values specified in 4.3, when gauge replacement proves necessary.

Bibliography

ISO 4008-1, *Road vehicles – Fuel injection pump testing –*

Part 1 : Dynamic conditions.

Part 2 : Static conditions.

Part 3 : Application and test procedures.

ISO 7440-1, *Road vehicles – Fuel injection equipment testing – Part 1 : Calibrating nozzle and holder assemblies.*

ISO 7876-1, *Fuel injection equipment – Vocabulary – Part 1 : Fuel injection pumps.*