

# SVENSK STANDARD

## SS 550000-1:2017

Fastställt/Approved: 2017-11-13  
Publicerad/Published: 2017-12-06  
Utgåva/Edition: 1  
Språk/Language: engelska/English  
ICS: 43.040.70

---

### **Vägfordon – Utbytbarhet vid installation – Del 1: Dragstångskoppling**

### **Commercial road vehicles – Interchangeability in installation – Part 1: Drawbar coupling**

This preview is downloaded from [www.sis.se](http://www.sis.se). Buy the entire standard via <https://www.sis.se/std-8029522>

# Standarder får världen att fungera

*SIS (Swedish Standards Institute) är en fristående ideell förening med medlemmar från både privat och offentlig sektor. Vi är en del av det europeiska och globala nätverk som utarbetar internationella standarder. Standarder är dokumenterad kunskap utvecklad av framstående aktörer inom industri, näringsliv och samhälle och befrämjar handel över gränser, bidrar till att processer och produkter blir säkrare samt effektiviserar din verksamhet.*

## Delta och påverka

Som medlem i SIS har du möjlighet att påverka framtida standarder inom ditt område på nationell, europeisk och global nivå. Du får samtidigt tillgång till tidig information om utvecklingen inom din bransch.

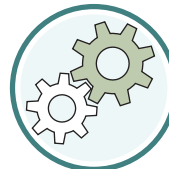
## Ta del av det färdiga arbetet

Vi erbjuder våra kunder allt som rör standarder och deras tillämpning. Hos oss kan du köpa alla publikationer du behöver – allt från enskilda standarder, tekniska rapporter och standardpaket till handböcker och onlinetjänster. Genom vår webbtjänst e-nav får du tillgång till ett lättnavigerat bibliotek där alla standarder som är aktuella för ditt företag finns tillgängliga. Standarder och handböcker är källor till kunskap. Vi säljer dem.

## Utveckla din kompetens och lyckas bättre i ditt arbete

Hos SIS kan du gå öppna eller företagsinterna utbildningar kring innehåll och tillämpning av standarder. Genom vår närhet till den internationella utvecklingen och ISO får du rätt kunskap i rätt tid, direkt från källan. Med vår kunskap om standarders möjligheter hjälper vi våra kunder att skapa verklig nytta och lönsamhet i sina verksamheter.

**Vill du veta mer om SIS eller hur standarder kan effektivisera din verksamhet är du välkommen in på [www.sis.se](http://www.sis.se) eller ta kontakt med oss på tel 08-555 523 00.**



# Standards make the world go round

*SIS (Swedish Standards Institute) is an independent non-profit organisation with members from both the private and public sectors. We are part of the European and global network that draws up international standards. Standards consist of documented knowledge developed by prominent actors within the industry, business world and society. They promote cross-border trade, they help to make processes and products safer and they streamline your organisation.*

## Take part and have influence

As a member of SIS you will have the possibility to participate in standardization activities on national, European and global level. The membership in SIS will give you the opportunity to influence future standards and gain access to early stage information about developments within your field.

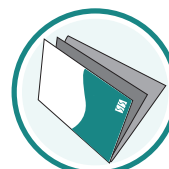
## Get to know the finished work

We offer our customers everything in connection with standards and their application. You can purchase all the publications you need from us - everything from individual standards, technical reports and standard packages through to manuals and online services. Our web service e-nav gives you access to an easy-to-navigate library where all standards that are relevant to your company are available. Standards and manuals are sources of knowledge. We sell them.

## Increase understanding and improve perception

With SIS you can undergo either shared or in-house training in the content and application of standards. Thanks to our proximity to international development and ISO you receive the right knowledge at the right time, direct from the source. With our knowledge about the potential of standards, we assist our customers in creating tangible benefit and profitability in their organisations.

**If you want to know more about SIS, or how standards can streamline your organisation, please visit [www.sis.se](http://www.sis.se) or contact us on phone +46 (0)8-555 523 00**



© Copyright/Upphovsrätten till denna produkt tillhör SIS, Swedish Standards Institute, Stockholm, Sverige. Användningen av denna produkt regleras av slutanvändarlicensen som återfinns i denna produkt, se standardens sista sidor.

© Copyright SIS, Swedish Standards Institute, Stockholm, Sweden. All rights reserved. The use of this product is governed by the end-user licence for this product. You will find the licence in the end of this document.

*Uppllysningar om sakinnehållet i standarden lämnas av SIS, Swedish Standards Institute, telefon 08-555 520 00. Standarder kan beställas hos SIS Förlag AB som även lämnar allmänna uppllysningar om svensk och utländsk standard.*

*Information about the content of the standard is available from the Swedish Standards Institute (SIS), telephone +46 8 555 520 00. Standards may be ordered from SIS Förlag AB, who can also provide general information about Swedish and foreign standards.*

Standarden är framtagen av kommittén för Sammankoppling av fordon samt utvändiga anordningar, SIS/TK 234.

Har du synpunkter på innehållet i den här standarden, vill du delta i ett kommande revideringsarbete eller vara med och ta fram andra standarder inom området? Gå in på [www.sis.se](http://www.sis.se) - där hittar du mer information.

**SS 550000-1:2017 (En)**

**Table of content**

Introduction .....	3
1 Scope .....	4
2 Normative references .....	4
3 Terms and definitions .....	4
4 Designation .....	4
4.1. Referencing .....	4
4.2. Reference .....	4
5 Installation categories.....	5
5.1 Drawbeams, mounting brackets and frames.....	5
5.1.1. Drilling patterns of categories.....	5
5.1.2. Dimensional requirement on drawbeam for mounting of drawbar coupling .....	6
5.2 Clevis couplings .....	7
5.2.1. General .....	7
5.2.2. Installation space documentation requirements.....	7

## **Introduction**

This standard is applied to clevis coupling for commercial vehicles. This standard is part of the series SS 550000. There are two series of standards which concern interchangeability. The interchangeability is divided into two parts, interchangeability in installation and interchangeability in application.

The series of standards include:

SS 550000-1, *Commercial road vehicles – Interchangeability in installation – Part 1: Drawbar coupling*

SS 550000-2, *Commercial road vehicles – Interchangeability in installation – Part 2: Drawbar eye*

SS 550100-1, *Commercial road vehicles – Interchangeability in application – Part 1: Clevis coupling 57 mm*

SS 550100-2, *Commercial road vehicles – Interchangeability in application – Part 2: Drawbar eye 57 mm*

This standard draws on SS-ISO 3584. SS-ISO 3584 defines 50 mm clevis coupling while a standard for 57 mm clevis coupling has hitherto been missing. While introducing a standard for 57 mm clevis couplings a new structure is introduced to this new standard. It is splitting information relevant for OEM:s from information relevant to end users. Furthermore, many non-value adding dimensions are deleted from the standard as compared to SS-ISO 3584. The current series of national standards focus on the geometric compatibility with specific address to 57 mm clevis couplings which are dominating in Sweden. A number of different coupling classes based on different performance values as in SS-ISO 3584 are not adopted in this standard. Hence the structure becomes simpler. Further information on interchangeability in installation is needed when mounting the equipment i.e. one or a couple of times during the lifetime of the vehicle. Information on interchangeability in application is needed almost every day. Accordingly, the structure of this series of standards, is tuned to the need of the user at different stages.

## SS 550000-1:2017 (En)

### 1 Scope

This Standard specifies the characteristics necessary for interchangeability in installation of clevis couplings on the frame (cross member, drawbeam or mounting bracket) of towing vehicles for trailer.

This Standard is applicable to drawbar couplings intended for connection to trailers equipped with a drawbar having a drawbar eye.

Characteristics not specified are left to the discretion of the component manufacturer.

### 2 Normative references

There are no normative references in this document.

### 3 Terms and definitions

For the purposes of this document, the following terms and definitions apply.

**3.1 drawbeam**  
structure on which a drawbar coupling can be installed and through which coupling forces are transferred to the chassis frame

**3.2 drawbar eye**  
component fitted to the forward extreme of the drawbar to enable mechanical coupling to a drawbar coupling. A drawbar eye can be either toroidal or have a specific detailed design with a specific internal diameter

**3.3 drawbar coupling**  
component that by means of a bolt or hook locks the drawbar eye to the towing vehicle

**3.4 clevis coupling**  
drawbar coupling that has a clevis to hold a bolt that locks the drawbar eye to the towing vehicle

**3.5 hook coupling**  
drawbar coupling that has a hook to which the drawbar eye is locked to the towing vehicle

### 4 Designation

#### 4.1. Referencing

Reference may be made to this standard for drawbar couplings mounting dimensions on the frame.

#### 4.2. Reference

Drawbar coupling installations meeting the requirements of this standard shall be identified by the following information, in the order given:

- a) reference to this standard
- b) number of category according to Table 1

EXAMPLE      SS 550000-1 – Category 2

## 5 Installation categories

### 5.1 Drawbeams, mounting brackets and frames

The installation categories shall have dimensions as stated in Table 1 and Table 2 below.

#### 5.1.1. Drilling patterns of categories

The dimensions of the categories of drilling pattern (see Figure 1) shall be as given in Table 1.

**Table 1 – Drilling patterns of categories**

Dimension	Category				
	1	2	3	4	5
$E_1$	83	83	120	140	160
$E_2$	56	56	55	80	100
$D_1$	–	55	75	85	95
$D_2$	10,5	10,5	15	17	21

Dimensions in millimeters

SS 550000-1:2017 (En)

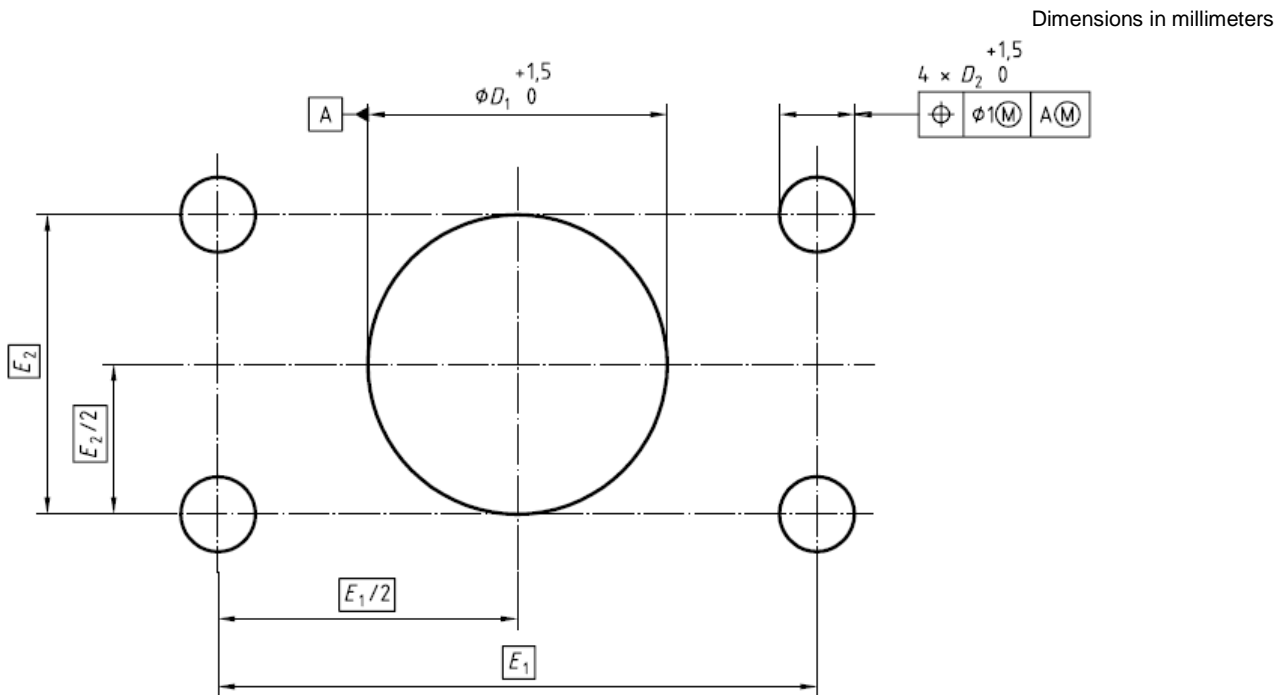


Figure 1 – Drilling pattern

5.1.2. Dimensional requirement on drawbeam for mounting of drawbar coupling

Dimensions on the drawbeam (cross member or mounting bracket) required for mounting of the drawbar coupling (see Figure 2), such as the minimum flat surface defined by the dimensions *F* and *G* shall be as given in Table 2. Tolerances on drilling pattern dimensions shall be as shown in Figure 1.

Table 2 – Dimensional requirements for frames

Dimensions in millimeters

Dimension	Category				
	1	2	3	4	5
<b>F max</b>	120	120	165	190	210
<b>G min</b>	95	95	100	130	150
<b>T max</b>	–	15	20	35	35