

# SVENSK STANDARD

## SS-ISO 13948-2:2017



Fastställt/Approved: 2017-01-11  
Publicerad/Published: 2017-01-17  
Utgåva/Edition: 3  
Språk/Language: engelska/English  
ICS: 43.060.40

---

### **Dieselmotorer – Insprutningspumpar och lågtrycksanslutningar för insprutningsmunstycken – Del 2: Ogängade anslutningar (ISO 13948-2:2016, IDT)**

### **Diesel engines – Fuel injection pumps and fuel injector low- pressure connections – Part 2: Non-threaded (push-on) connections (ISO 13948-2:2016, IDT)**

This preview is downloaded from [www.sis.se](http://www.sis.se). Buy the entire standard via <https://www.sis.se/std-8024406>

# Standarder får världen att fungera

*SIS (Swedish Standards Institute) är en fristående ideell förening med medlemmar från både privat och offentlig sektor. Vi är en del av det europeiska och globala nätverk som utarbetar internationella standarder. Standarder är dokumenterad kunskap utvecklad av framstående aktörer inom industri, näringsliv och samhälle och befrämjar handel över gränser, bidrar till att processer och produkter blir säkrare samt effektiviserar din verksamhet.*

## Delta och påverka

Som medlem i SIS har du möjlighet att påverka framtida standarder inom ditt område på nationell, europeisk och global nivå. Du får samtidigt tillgång till tidig information om utvecklingen inom din bransch.

## Ta del av det färdiga arbetet

Vi erbjuder våra kunder allt som rör standarder och deras tillämpning. Hos oss kan du köpa alla publikationer du behöver – allt från enskilda standarder, tekniska rapporter och standardpaket till handböcker och onlinetjänster. Genom vår webbtjänst e-nav får du tillgång till ett lättnavigerat bibliotek där alla standarder som är aktuella för ditt företag finns tillgängliga. Standarder och handböcker är källor till kunskap. Vi säljer dem.

## Utveckla din kompetens och lyckas bättre i ditt arbete

Hos SIS kan du gå öppna eller företagsinterna utbildningar kring innehåll och tillämpning av standarder. Genom vår närhet till den internationella utvecklingen och ISO får du rätt kunskap i rätt tid, direkt från källan. Med vår kunskap om standarders möjligheter hjälper vi våra kunder att skapa verklig nytta och lönsamhet i sina verksamheter.

**Vill du veta mer om SIS eller hur standarder kan effektivisera din verksamhet är du välkommen in på [www.sis.se](http://www.sis.se) eller ta kontakt med oss på tel 08-555 523 00.**



# Standards make the world go round

*SIS (Swedish Standards Institute) is an independent non-profit organisation with members from both the private and public sectors. We are part of the European and global network that draws up international standards. Standards consist of documented knowledge developed by prominent actors within the industry, business world and society. They promote cross-border trade, they help to make processes and products safer and they streamline your organisation.*

## Take part and have influence

As a member of SIS you will have the possibility to participate in standardization activities on national, European and global level. The membership in SIS will give you the opportunity to influence future standards and gain access to early stage information about developments within your field.

## Get to know the finished work

We offer our customers everything in connection with standards and their application. You can purchase all the publications you need from us - everything from individual standards, technical reports and standard packages through to manuals and online services. Our web service e-nav gives you access to an easy-to-navigate library where all standards that are relevant to your company are available. Standards and manuals are sources of knowledge. We sell them.

## Increase understanding and improve perception

With SIS you can undergo either shared or in-house training in the content and application of standards. Thanks to our proximity to international development and ISO you receive the right knowledge at the right time, direct from the source. With our knowledge about the potential of standards, we assist our customers in creating tangible benefit and profitability in their organisations.

**If you want to know more about SIS, or how standards can streamline your organisation, please visit [www.sis.se](http://www.sis.se) or contact us on phone +46 (0)8-555 523 00**



Den internationella standarden ISO 13948-2:2016 gäller som svensk standard. Detta dokument innehåller den officiella engelska versionen av ISO 13948-2:2016.

Denna standard ersätter SS-ISO 13948-2:2012, utgåva 2.

The International Standard ISO 13948-2:2016 has the status of a Swedish Standard. This document contains the official English version of ISO 13948-2:2016.

This standard supersedes the Swedish Standard SS-ISO 13948-2:2012, edition 2.

© Copyright/Upphovsrätten till denna produkt tillhör SIS, Swedish Standards Institute, Stockholm, Sverige. Användningen av denna produkt regleras av slutanvändarlicensen som återfinns i denna produkt, se standardens sista sidor.

© Copyright SIS, Swedish Standards Institute, Stockholm, Sweden. All rights reserved. The use of this product is governed by the end-user licence for this product. You will find the licence in the end of this document.

*Upplysningar om sakinnehållet i standarden lämnas av SIS, Swedish Standards Institute, telefon 08-555 520 00. Standarder kan beställas hos SIS Förlag AB som även lämnar allmänna upplysningar om svensk och utländsk standard.*

*Information about the content of the standard is available from the Swedish Standards Institute (SIS), telephone +46 8 555 520 00. Standards may be ordered from SIS Förlag AB, who can also provide general information about Swedish and foreign standards.*

Denna standard är framtagen av kommittén för Motorer i bilar, SIS/TK 220.

Har du synpunkter på innehållet i den här standarden, vill du delta i ett kommande revideringsarbete eller vara med och ta fram andra standarder inom området? Gå in på [www.sis.se](http://www.sis.se) - där hittar du mer information.



# Contents

Page

<b>Foreword</b> .....	<b>iv</b>
<b>Introduction</b> .....	<b>v</b>
<b>1 Scope</b> .....	<b>1</b>
<b>2 Normative references</b> .....	<b>1</b>
<b>3 Terms and definitions</b> .....	<b>1</b>
<b>4 Connection designs and applications</b> .....	<b>1</b>
4.1 Type A: nipple connection.....	1
4.2 Type B: stand pipe connection.....	2
4.3 Type C: “quick connector coupling” connection.....	2
<b>5 Dimensions and surface quality</b> .....	<b>3</b>
5.1 Type A connection ends.....	3
5.1.1 Nipple types.....	3
5.1.2 Basic dimensions and tolerances.....	5
5.1.3 Radii.....	6
5.1.4 Surface quality.....	6
5.2 Type B connection end.....	7
5.3 Type C connection end.....	8
<b>6 Designation</b> .....	<b>11</b>
<b>Bibliography</b> .....	<b>12</b>

## Foreword

ISO (the International Organization for Standardization) is a worldwide federation of national standards bodies (ISO member bodies). The work of preparing International Standards is normally carried out through ISO technical committees. Each member body interested in a subject for which a technical committee has been established has the right to be represented on that committee. International organizations, governmental and non-governmental, in liaison with ISO, also take part in the work. ISO collaborates closely with the International Electrotechnical Commission (IEC) on all matters of electrotechnical standardization.

The procedures used to develop this document and those intended for its further maintenance are described in the ISO/IEC Directives, Part 1. In particular the different approval criteria needed for the different types of ISO documents should be noted. This document was drafted in accordance with the editorial rules of the ISO/IEC Directives, Part 2 (see [www.iso.org/directives](http://www.iso.org/directives)).

Attention is drawn to the possibility that some of the elements of this document may be the subject of patent rights. ISO shall not be held responsible for identifying any or all such patent rights. Details of any patent rights identified during the development of the document will be in the Introduction and/or on the ISO list of patent declarations received (see [www.iso.org/patents](http://www.iso.org/patents)).

Any trade name used in this document is information given for the convenience of users and does not constitute an endorsement.

For an explanation on the meaning of ISO specific terms and expressions related to conformity assessment, as well as information about ISO's adherence to the World Trade Organization (WTO) principles in the Technical Barriers to Trade (TBT) see the following URL: [www.iso.org/iso/foreword.html](http://www.iso.org/iso/foreword.html).

The committee responsible for this document is ISO/TC 22, *Road vehicles*, Subcommittee SC 34, *Propulsion, powertrain and powertrain fluids*.

This third edition cancels and replaces the second edition (ISO 13948-2:2012), which has been technically revised with the following changes:

— a normative reference has been made to ISO 4288 for the measurement of surface texture.

A list of all the parts in the ISO 13948 series can be found on the ISO website.

## **Introduction**

It is recognized that a large variety of low-pressure connections exist on fuel injection equipment, using different sealing principles, as well as designs. This document attempts to provide the user with a common set of preferred types.

This document is divided into two parts, covering threaded connections (ISO 13948-1) and non-threaded (push-on) connections (ISO 13948-2) for use with low-pressure fuel supply and return, boost air pressure and lubricating oil supply and return.





# Diesel engines — Fuel injection pumps and fuel injector low-pressure connections —

## Part 2: Non-threaded (push-on) connections

### 1 Scope

This document specifies requirements for the connection ends of push-on connections used with fuel injection equipment.

Three types of push-on connections (types A, B and C) are described in this document.

NOTE Low-pressure connections to fuel filters are covered in other International Standards; see the bibliography. High-pressure end-connections for pumps and injectors are covered in ISO 2974 and ISO 13296.

### 2 Normative references

The following documents are referred to in the text in such a way that some or all of their content constitutes requirements of this document. For dated references, only the edition cited applies. For undated references, the latest edition of the referenced document (including any amendments) applies.

ISO 4288, *Geometrical Product Specifications (GPS) — Surface texture: Profile method — Rules and procedures for the assessment of surface texture*.

### 3 Terms and definitions

For the purposes of this document, the terms and definitions given in ISO 7876 (all parts) apply.

ISO and IEC maintain terminological databases for use in standardization at the following addresses:

- IEC Electropedia: available at <http://www.electropedia.org/>
- ISO Online browsing platform: available at <http://www.iso.org/obp>

### 4 Connection designs and applications

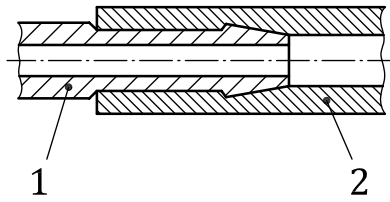
#### 4.1 Type A: nipple connection

EXAMPLE See [Figure 1](#).

This design is intended for use directly with the mating hose (2) or in conjunction with a retaining clip around the hose (not shown) for a more secure connection.

The nipple (1) can be machined (see [Figure 4](#)), formed (see [Figure 5](#) and [Figure 6](#)) or moulded (see [Figure 7](#)).

**SS-ISO 13948-2:2017 (E)**



- Key**
- 1 nipple
  - 2 hose

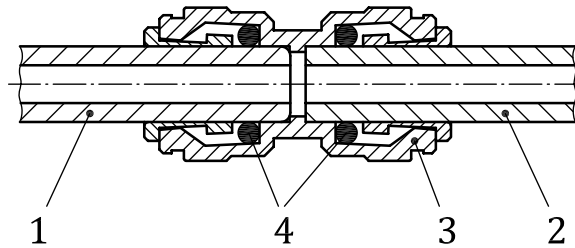
**Figure 1 — Type A connection (principle)**

**4.2 Type B: stand pipe connection**

EXAMPLE See [Figure 2](#).

This design is used in conjunction with proprietary push-on connections (3) attached to the mating hose (2) that seals by compressing ring seals (4) around the outside diameters of the stand pipe (1) and of the mating hose (2).

An identification may be applied to indicate to the user that the hose is fully engaged (see [Figure 10](#)).



- Key**
- 1 stand pipe
  - 2 hose
  - 3 push-on connection
  - 4 ring seals

**Figure 2 — Type B connection (principle)**

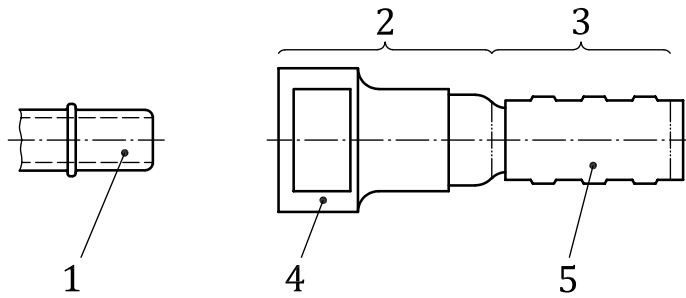
**4.3 Type C: “quick connector coupling” connection**

NOTE As specified in SAE J2044[9].

EXAMPLE See [Figure 3](#).

This design is used in conjunction with proprietary push-on “quick connector couplings” attached to the mating male tube end form. The quick connector coupling contains one or more O-ring seals to seal along the male tube end outer surface, and a latching device to engage with the collar diameter feature.

The male tube end form is shown in [Figure 11](#) and the dimensions are defined in [Table 4](#) and [Table 5](#).



**Key**

- 1 male tube end
- 2 female connection end
- 3 stem
- 4 quick connector coupling
- 5 section of hose or tube

**Figure 3 — Type C connection (principle)**

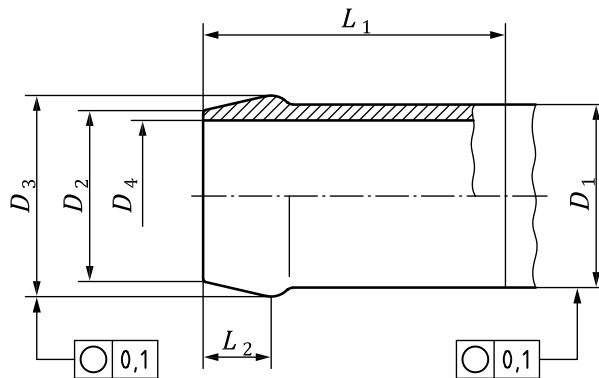
**5 Dimensions and surface quality**

**5.1 Type A connection ends**

**5.1.1 Nipple types**

**5.1.1.1 Nipple, machined, type A.1**

Dimensions in millimetres



NOTE For the parameters, see [Table 1](#).

**Figure 4 — Nipple, type A.1**