

SVENSK STANDARD

SS-ISO 19973-3:2016



Fastställt/Approved: 2016-06-15
Publicerad/Published: 2016-06-17
Utgåva/Edition: 2
Språk/Language: engelska/English
ICS: 23.100.01

Pneumatik – Bedömning av komponenters tillförlitlighet genom provning –

Del 3: Cylindrar med kolvstång (ISO 19973-3:2015, IDT)

Pneumatic fluid power – Assessment of component reliability by testing –

Part 3: Cylinders with piston rod (ISO 19973-3:2015, IDT)

This preview is downloaded from www.sis.se. Buy the entire standard via <https://www.sis.se/std-8020982>

Standarder får världen att fungera

SIS (Swedish Standards Institute) är en fristående ideell förening med medlemmar från både privat och offentlig sektor. Vi är en del av det europeiska och globala nätverk som utarbetar internationella standarder. Standarder är dokumenterad kunskap utvecklad av framstående aktörer inom industri, näringsliv och samhälle och befrämjar handel över gränser, bidrar till att processer och produkter blir säkrare samt effektiviserar din verksamhet.

Delta och påverka

Som medlem i SIS har du möjlighet att påverka framtida standarder inom ditt område på nationell, europeisk och global nivå. Du får samtidigt tillgång till tidig information om utvecklingen inom din bransch.

Ta del av det färdiga arbetet

Vi erbjuder våra kunder allt som rör standarder och deras tillämpning. Hos oss kan du köpa alla publikationer du behöver – allt från enskilda standarder, tekniska rapporter och standardpaket till handböcker och onlinetjänster. Genom vår webbtjänst e-nav får du tillgång till ett lättnavigerat bibliotek där alla standarder som är aktuella för ditt företag finns tillgängliga. Standarder och handböcker är källor till kunskap. Vi säljer dem.

Utveckla din kompetens och lyckas bättre i ditt arbete

Hos SIS kan du gå öppna eller företagsinterna utbildningar kring innehåll och tillämpning av standarder. Genom vår närhet till den internationella utvecklingen och ISO får du rätt kunskap i rätt tid, direkt från källan. Med vår kunskap om standarders möjligheter hjälper vi våra kunder att skapa verklig nytta och lönsamhet i sina verksamheter.

Vill du veta mer om SIS eller hur standarder kan effektivisera din verksamhet är du välkommen in på www.sis.se eller ta kontakt med oss på tel 08-555 523 00.



Standards make the world go round

SIS (Swedish Standards Institute) is an independent non-profit organisation with members from both the private and public sectors. We are part of the European and global network that draws up international standards. Standards consist of documented knowledge developed by prominent actors within the industry, business world and society. They promote cross-border trade, they help to make processes and products safer and they streamline your organisation.

Take part and have influence

As a member of SIS you will have the possibility to participate in standardization activities on national, European and global level. The membership in SIS will give you the opportunity to influence future standards and gain access to early stage information about developments within your field.

Get to know the finished work

We offer our customers everything in connection with standards and their application. You can purchase all the publications you need from us - everything from individual standards, technical reports and standard packages through to manuals and online services. Our web service e-nav gives you access to an easy-to-navigate library where all standards that are relevant to your company are available. Standards and manuals are sources of knowledge. We sell them.

Increase understanding and improve perception

With SIS you can undergo either shared or in-house training in the content and application of standards. Thanks to our proximity to international development and ISO you receive the right knowledge at the right time, direct from the source. With our knowledge about the potential of standards, we assist our customers in creating tangible benefit and profitability in their organisations.

If you want to know more about SIS, or how standards can streamline your organisation, please visit www.sis.se or contact us on phone +46 (0)8-555 523 00



Den internationella standarden ISO 19973-3:2015 gäller som svensk standard. Detta dokument innehåller den officiella engelska versionen av ISO 19973-3:2015.

Denna standard ersätter SS-ISO 19973-3:2007, utgåva 1.

The International Standard ISO 19973-3:2015 has the status of a Swedish Standard. This document contains the official English version of ISO 19973-3:2015.

This standard supersedes the Swedish Standard SS-ISO 19973-3:2007, edition 1.

© Copyright/Upphovsrätten till denna produkt tillhör SIS, Swedish Standards Institute, Stockholm, Sverige. Användningen av denna produkt regleras av slutanvändarlicensen som återfinns i denna produkt, se standardens sista sidor.

© Copyright SIS, Swedish Standards Institute, Stockholm, Sweden. All rights reserved. The use of this product is governed by the end-user licence for this product. You will find the licence in the end of this document.

Upplysningar om sakinnehållet i standarden lämnas av SIS, Swedish Standards Institute, telefon 08-555 520 00. Standarder kan beställas hos SIS Förlag AB som även lämnar allmänna upplysningar om svensk och utländsk standard.

Information about the content of the standard is available from the Swedish Standards Institute (SIS), telephone +46 8 555 520 00. Standards may be ordered from SIS Förlag AB, who can also provide general information about Swedish and foreign standards.

Denna standard är framtagen av kommittén för Hydraulik och pneumatik, SIS/TK 106.

Har du synpunkter på innehållet i den här standarden, vill du delta i ett kommande revideringsarbete eller vara med och ta fram andra standarder inom området? Gå in på www.sis.se - där hittar du mer information.

Contents

Page

Foreword	iv
Introduction	v
1 Scope	1
2 Normative references	1
3 Terms and definitions	1
4 Symbols and units	2
5 Test equipment	2
6 Test conditions	2
6.1 General test conditions.....	2
6.2 Initial condition.....	3
6.3 Endurance test conditions.....	3
6.3.1 Orientation.....	3
6.3.2 Side loads.....	3
6.3.3 Stroke lengths.....	4
6.3.4 Test operating time.....	6
6.4 Operating adjustments.....	7
7 Test procedures	7
7.1 Timing of checks and measurements.....	7
7.2 Type and scope of checks and measurements.....	7
7.2.1 Functional check.....	7
7.2.2 Measurement of leakage.....	7
7.2.3 Minimum working pressure test (for double-acting cylinders only).....	7
7.2.4 Stroke time test.....	8
8 Failure criteria and threshold levels	8
8.1 General.....	8
8.2 Functional failure.....	8
8.3 Failure due to leakage.....	8
8.4 Failure related to minimum working pressure.....	9
8.5 Failure due to exceeding the maximum test stroke time.....	9
8.6 Customised agreements.....	9
9 Data analysis	9
10 Test report	9
11 Identification statement (reference to this part of ISO 19973).....	10
Annex A (informative) Methods for calculating side load masses and related dimensions	11
Annex B (informative) Test data sheet	18
Bibliography	21

Foreword

ISO (the International Organization for Standardization) is a worldwide federation of national standards bodies (ISO member bodies). The work of preparing International Standards is normally carried out through ISO technical committees. Each member body interested in a subject for which a technical committee has been established has the right to be represented on that committee. International organizations, governmental and non-governmental, in liaison with ISO, also take part in the work. ISO collaborates closely with the International Electrotechnical Commission (IEC) on all matters of electrotechnical standardization.

The procedures used to develop this document and those intended for its further maintenance are described in the ISO/IEC Directives, Part 1. In particular the different approval criteria needed for the different types of ISO documents should be noted. This document was drafted in accordance with the editorial rules of the ISO/IEC Directives, Part 2 (see www.iso.org/directives).

Attention is drawn to the possibility that some of the elements of this document may be the subject of patent rights. ISO shall not be held responsible for identifying any or all such patent rights. Details of any patent rights identified during the development of the document will be in the Introduction and/or on the ISO list of patent declarations received (see www.iso.org/patents).

Any trade name used in this document is information given for the convenience of users and does not constitute an endorsement.

For an explanation on the meaning of ISO specific terms and expressions related to conformity assessment, as well as information about ISO's adherence to the WTO principles in the Technical Barriers to Trade (TBT) see the following URL: [Foreword - Supplementary information](#)

The committee responsible for this document is ISO/TC 131, *Fluid power systems*.

This second edition cancels and replaces the first edition (ISO 19973-3:2007), which has been technically revised.

ISO 19973 consists of the following parts, under the general title *Pneumatic fluid power — Assessment of component reliability by testing*:

- *Part 1: General procedures*
- *Part 2: Directional control valves*
- *Part 3: Cylinders with piston rod*
- *Part 4: Pressure regulators*
- *Part 5: Non-return valves, shuttle valves, dual pressure valves (AND function), one-way adjustable flow control valves, quick-exhaust valves.*

Introduction

In pneumatic fluid power systems, power is transmitted and controlled through a gas under pressure within a circuit. Pneumatic fluid power systems are composed of components and are an integral part of various types of machines and equipment. Efficient and economical production requires highly reliable machines and equipment. This part of ISO 19973 is intended to provide requirements and test conditions that permit the assessment of the inherent reliability of pneumatic cylinders with piston rod.

It is necessary that machine producers know the reliability of the components that make up their machine's pneumatic fluid power system. Knowing the reliability characteristic of the component, the producers can model the system and make decisions on service intervals, spare parts' inventory and areas for future improvements.

There are three primary levels in the determination of component reliability:

- a) preliminary design analysis: finite element analysis (FEA), failure mode and effect analysis (FMEA);
- b) laboratory testing and reliability modelling: physics of failure, reliability prediction, pre-production evaluation;
- c) collection of field data: maintenance reports, warranty analysis.

Each level has its application during the life of a component. A preliminary design analysis is useful to identify possible failure modes and eliminate them or reduce their effect on reliability. When prototypes are available, in-house laboratory reliability tests are run and initial reliability can be determined. Reliability testing is often continued into the initial production run and throughout the production lifetime as a continuing evaluation of the component. Collection of field data are possible when products are operating and data on their failures are available.

Pneumatic fluid power — Assessment of component reliability by testing —

Part 3: Cylinders with piston rod

1 Scope

This part of ISO 19973 provides test procedures for assessing the reliability of pneumatic cylinders with piston rod, both single-acting and double-acting, by testing and the methods of reporting the results of testing. General test conditions and the calculation method are provided in ISO 19973-1. The methods specified in ISO 19973-1 apply to the first failure, as obtained with the three-point moving average (3PMA) method, without repairs, but excluding outliers.

The lifetime of pneumatic cylinders is usually given in number of cycles or in kilometres. Therefore, whenever the term “time” is used in this part of ISO 19973, this variable is to be understood as cycles or kilometres.

This part of ISO 19973 also specifies test equipment and threshold levels for tests to assess the reliability of pneumatic cylinders with piston rods.

This part of ISO 19973 is intended to be applied to pneumatic piston rod cylinders that conform to ISO 6430, ISO 6432, ISO 15552, and ISO 21287; however, pneumatic piston rod cylinders that do not conform to these International Standards but are used in the same range of operating conditions can be tested in accordance with one of the classes defined in [Tables 1](#) and [2](#).

2 Normative references

The following documents, in whole or in part, are normatively referenced in this document and are indispensable for its application. For dated references, only the edition cited applies. For undated references, the latest edition of the referenced document (including any amendments) applies.

ISO 1219-1, *Fluid power systems and components — Graphical symbols and circuit diagrams — Part 1: Graphical symbols for conventional use and data-processing applications*

ISO 5598, *Fluid power systems and components — Vocabulary*

ISO 10099:2001, *Pneumatic fluid power — Cylinders — Final examination and acceptance criteria*

ISO 19973-1, *Pneumatic fluid power — Assessment of component reliability by testing — Part 1: General procedures*

ISO 80000-1, *Quantities and units — Part 1: General*

IEC 60050-191, *International Electrotechnical Vocabulary, chapter 191: Dependability and quality of service*

3 Terms and definitions

For the purposes of this document, the terms and definitions given in ISO 5598, ISO 19973-1 and IEC 60050-191 apply.

NOTE Where a conflict of definitions exists for a term in any of these three documents, the following priority order applies: first, ISO 19973-1; second, ISO 5598; and third, IEC 60050-191.

4 Symbols and units

Units of measurement shall be in accordance with ISO 80000-1.

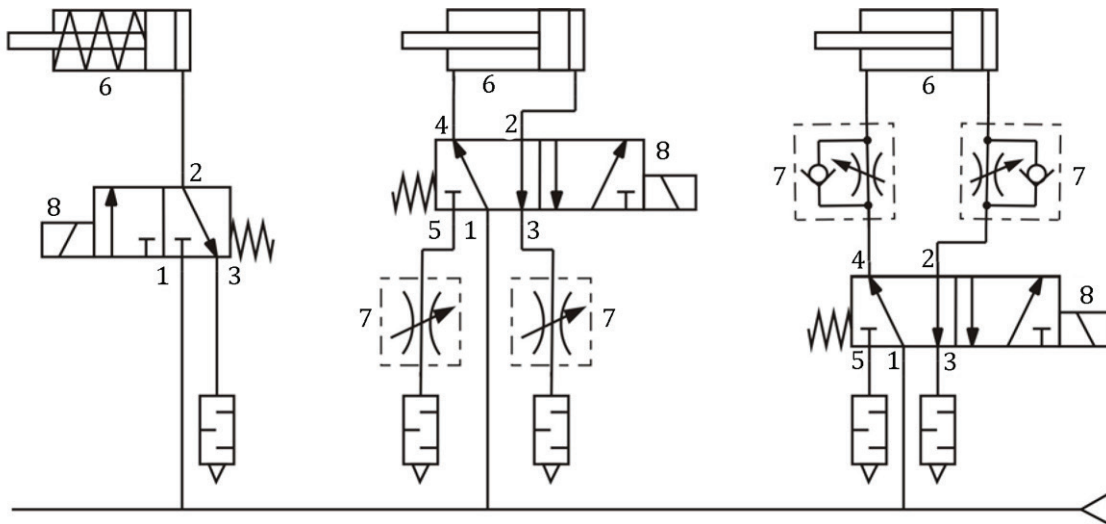
NOTE Graphical symbols used in this part of ISO 19973 conform to the requirements given in ISO 1219-1.

5 Test equipment

5.1 The test circuit typically includes a pressure source, the cylinders being tested, solenoid valves, and an adjustable flow control valve, which acts as a speed controller. See Figure 1 for a circuit diagram of an example test circuit.

The basic circuits in Figure 1 do not incorporate all the safety devices necessary to protect against damage in the event of component failure. It is important that those responsible for carrying out the test give due consideration to safeguarding both personnel and equipment.

5.2 Cylinders to be tested shall be rigidly installed in the horizontal position and fixed to a secure base to reduce vibration. They shall be fixed at both ends. If necessary, alternate the motion of the cylinders to allow one to extend while another retracts.



Key

- 1 to 5 ports
- 6 pneumatic cylinder being tested
- 7 adjustable flow control valve (speed controller)
- 8 directional control valve

Figure 1 — Example of a test circuit for determining the reliability of a pneumatic piston rod cylinder by testing

6 Test conditions

6.1 General test conditions

All test units shall have passed an acceptance test conducted in accordance with ISO 10099. The general test conditions shall be in accordance with ISO 19973-1.

6.2 Initial condition

The leakage rate of new cylinders shall not exceed the values for this characteristic specified in ISO 10099:2001, Table 1.

6.3 Endurance test conditions

6.3.1 Orientation

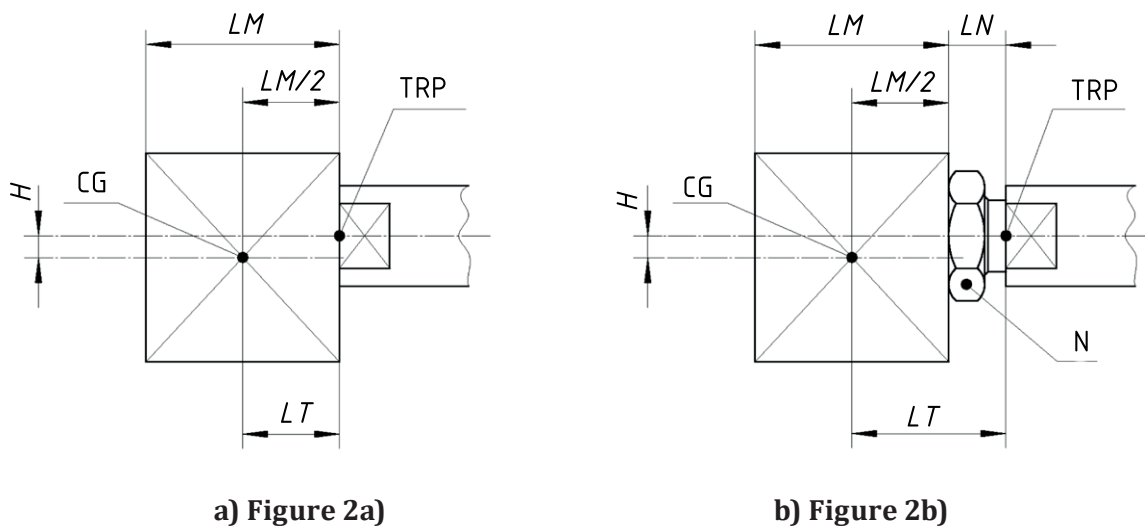
The cylinder being tested shall be installed in the horizontal position.

6.3.2 Side loads

6.3.2.1 No side loads shall be applied to single-acting cylinders. Test results can be related only to the tested stroke.

6.3.2.2 For double-acting cylinders, the side load shall be mounted as follows.

- The side load shall be tightened against the shoulder of the piston rod close to the theoretical reference point (TRP) [see ISO 6099 and Figure 2 a)]. This mounting type should be preferred.
- The side load masses and the distances from the TRP for double-acting cylinders shall be in accordance with Table 1.
- When a counter nut is required, the side load shall be mounted with a clearance LN from the TRP [see Figure 2 b)]. However, the distance LT shall be maintained as shown in Table 1.
- The side load shall be mounted to engage the piston rod at a distance H below the centre of gravity (CG). Values for H are given in Table 1.



Key

CG	centre of gravity of the side load	LN	optional space for a counter nut
H	eccentricity of the side load	N	counter nut (optional)
LT	distance between TRP and CG	TRP	theoretical reference point
LM	longitudinal length of the side load		

Figure 2 — Distance of centre of gravity of the side load from the cylinder's theoretical reference point (TRP) and its eccentricity