

SVENSK STANDARD

SS-ISO 2296:2018



Fastställt/Approved: 2018-10-01
Utgåva/Edition: 2
Språk/Language: engelska/English
ICS: 25.100.40

Cirkelsågblad för metallbearbetning – Metrisk serie (ISO 2296:2018, IDT)

Metal slitting saws with fine and coarse teeth – Metric series (ISO 2296:2018, IDT)

This preview is downloaded from www.sis.se. Buy the entire standard via <https://www.sis.se/std-80007014>

Standarder får världen att fungera

SIS (Swedish Standards Institute) är en fristående ideell förening med medlemmar från både privat och offentlig sektor. Vi är en del av det europeiska och globala nätverk som utarbetar internationella standarder. Standarder är dokumenterad kunskap utvecklad av framstående aktörer inom industri, näringsliv och samhälle och befrämjar handel över gränser, bidrar till att processer och produkter blir säkrare samt effektiviserar din verksamhet.

Delta och påverka

Som medlem i SIS har du möjlighet att påverka framtida standarder inom ditt område på nationell, europeisk och global nivå. Du får samtidigt tillgång till tidig information om utvecklingen inom din bransch.

Ta del av det färdiga arbetet

Vi erbjuder våra kunder allt som rör standarder och deras tillämpning. Hos oss kan du köpa alla publikationer du behöver – allt från enskilda standarder, tekniska rapporter och standardpaket till handböcker och onlinetjänster. Genom vår webbtjänst e-nav får du tillgång till ett lättnavigerat bibliotek där alla standarder som är aktuella för ditt företag finns tillgängliga. Standarder och handböcker är källor till kunskap. Vi säljer dem.

Utveckla din kompetens och lyckas bättre i ditt arbete

Hos SIS kan du gå öppna eller företagsinterna utbildningar kring innehåll och tillämpning av standarder. Genom vår närhet till den internationella utvecklingen och ISO får du rätt kunskap i rätt tid, direkt från källan. Med vår kunskap om standarders möjligheter hjälper vi våra kunder att skapa verklig nytta och lönsamhet i sina verksamheter.

Vill du veta mer om SIS eller hur standarder kan effektivisera din verksamhet är du välkommen in på www.sis.se eller ta kontakt med oss på tel 08-555 523 00.



Standards make the world go round

SIS (Swedish Standards Institute) is an independent non-profit organisation with members from both the private and public sectors. We are part of the European and global network that draws up international standards. Standards consist of documented knowledge developed by prominent actors within the industry, business world and society. They promote cross-border trade, they help to make processes and products safer and they streamline your organisation.

Take part and have influence

As a member of SIS you will have the possibility to participate in standardization activities on national, European and global level. The membership in SIS will give you the opportunity to influence future standards and gain access to early stage information about developments within your field.

Get to know the finished work

We offer our customers everything in connection with standards and their application. You can purchase all the publications you need from us - everything from individual standards, technical reports and standard packages through to manuals and online services. Our web service e-nav gives you access to an easy-to-navigate library where all standards that are relevant to your company are available. Standards and manuals are sources of knowledge. We sell them.

Increase understanding and improve perception

With SIS you can undergo either shared or in-house training in the content and application of standards. Thanks to our proximity to international development and ISO you receive the right knowledge at the right time, direct from the source. With our knowledge about the potential of standards, we assist our customers in creating tangible benefit and profitability in their organisations.

If you want to know more about SIS, or how standards can streamline your organisation, please visit www.sis.se or contact us on phone +46 (0)8-555 523 00



Den internationella standarden ISO 2296:2018 gäller som svensk standard. Detta dokument innehåller den officiella engelska versionen av ISO 2296:2018.

Denna standard ersätter SS-ISO 2296:2011, utgåva 1

The International Standard ISO 2296:2018 has the status of a Swedish Standard. This document contains the official English version of ISO 2296:2018.

This standard supersedes the SS-ISO 2296:2011, edition 1

© Copyright/Upphovsrätten till denna produkt tillhör SIS, Swedish Standards Institute, Stockholm, Sverige. Användningen av denna produkt regleras av slutanvändarlicensen som återfinns i denna produkt, se standardens sista sidor.

© Copyright SIS, Swedish Standards Institute, Stockholm, Sweden. All rights reserved. The use of this product is governed by the end-user licence for this product. You will find the licence in the end of this document.

Uppllysningar om sakinnehållet i standarden lämnas av SIS, Swedish Standards Institute, telefon 08-555 520 00. Standarder kan beställas hos SIS som även lämnar allmänna upplysningar om svensk och utländsk standard.

Information about the content of the standard is available from the Swedish Standards Institute (SIS), telephone +46 8 555 520 00. Standards may be ordered from SIS, who can also provide general information about Swedish and foreign standards.

Denna standard är framtagen av kommittén för Skärande verktyg, SIS/TK 273.

Har du synpunkter på innehållet i den här standarden, vill du delta i ett kommande revideringsarbete eller vara med och ta fram andra standarder inom området? Gå in på www.sis.se - där hittar du mer information.

Contents		Page
Foreword		v
1 Scope		1
2 Normative references		1
3 Terms and definitions		1
4 Dimensions and number of teeth		1
4.1 General		1
4.2 Dimensions of metal slitting saws with fine teeth.....		1
4.3 Dimensions of metal slitting saws with coarse teeth.....		3
5 Mechanical characteristics		3
5.1 Side relief.....		3
5.2 Keying		3
5.3 Metal slitting saws with pine hole drive.....		3
Annex A (informative) Determination of the number or pitch of the teeth		4
Annex B (informative) Relationship between designations in this document and ISO 13399 (all parts)		5
Bibliography		6

Foreword

ISO (the International Organization for Standardization) is a worldwide federation of national standards bodies (ISO member bodies). The work of preparing International Standards is normally carried out through ISO technical committees. Each member body interested in a subject for which a technical committee has been established has the right to be represented on that committee. International organizations, governmental and non-governmental, in liaison with ISO, also take part in the work. ISO collaborates closely with the International Electrotechnical Commission (IEC) on all matters of electrotechnical standardization.

The procedures used to develop this document and those intended for its further maintenance are described in the ISO/IEC Directives, Part 1. In particular, the different approval criteria needed for the different types of ISO documents should be noted. This document was drafted in accordance with the editorial rules of the ISO/IEC Directives, Part 2 (see www.iso.org/directives).

Attention is drawn to the possibility that some of the elements of this document may be the subject of patent rights. ISO shall not be held responsible for identifying any or all such patent rights. Details of any patent rights identified during the development of the document will be in the Introduction and/or on the ISO list of patent declarations received (see www.iso.org/patents).

Any trade name used in this document is information given for the convenience of users and does not constitute an endorsement.

For an explanation of the voluntary nature of standards, the meaning of ISO specific terms and expressions related to conformity assessment, as well as information about ISO's adherence to the World Trade Organization (WTO) principles in the Technical Barriers to Trade (TBT) see www.iso.org/iso/foreword.html.

This document was prepared by Technical Committee ISO/TC 29, *Small tools*, Subcommittee SC 9, *Tools with defined cutting edges, holding tools, cutting items, adaptive items and interfaces*.

Any feedback or questions on this document should be directed to the user's national standards body. A complete listing of these bodies can be found at www.iso.org/members.html.

This third edition cancels and replaces the second edition (ISO 2296:2011), of which it constitutes a minor revision.

The main changes compared to the previous edition are as follows:

- addition of [Annex B](#);
- editorial changes to align with the ISO/IEC Directives.

Metal slitting saws with fine and coarse teeth — Metric series

1 Scope

This document specifies the dimensions and the mechanical characteristics of metal slitting saws, metric series. It applies to the following two types of metal slitting saws:

- metal slitting saws with fine teeth;
- metal slitting saws with coarse teeth.

If there is a need to extend the range or introduce other series of teeth, it is intended that such additions be according to the data given in the graph in [Annex A](#).

2 Normative references

The following documents are referred to in the text in such a way that some or all of their content constitutes requirements of this document. For dated references, only the edition cited applies. For undated references, the latest edition of the referenced document (including any amendments) applies.

ISO 240, *Milling cutters — Interchangeability dimensions for cutter arbors or cutter mandrels*

ISO 2924, *Solid and segmental circular saws for cold cutting of metals — Interchangeability dimensions of the drive — Saw diameter range 224 to 2 240 mm*

3 Terms and definitions

No terms and definitions are listed in this document.

ISO and IEC maintain terminological databases for use in standardization at the following addresses:

- ISO Online browsing platform: available at <https://www.iso.org/obp>
- IEC Electropedia: available at <http://www.electropedia.org/>

4 Dimensions and number of teeth

4.1 General

The ratio between the number of teeth for saws with coarse teeth and the number of teeth for saws with fine teeth is 0,5 and specific values are related to saw diameter and thickness.

4.2 Dimensions of metal slitting saws with fine teeth

The dimensions of metal slitting saws with fine teeth shall be in accordance with the indications given in [Figure 1](#) and [Table 1](#).

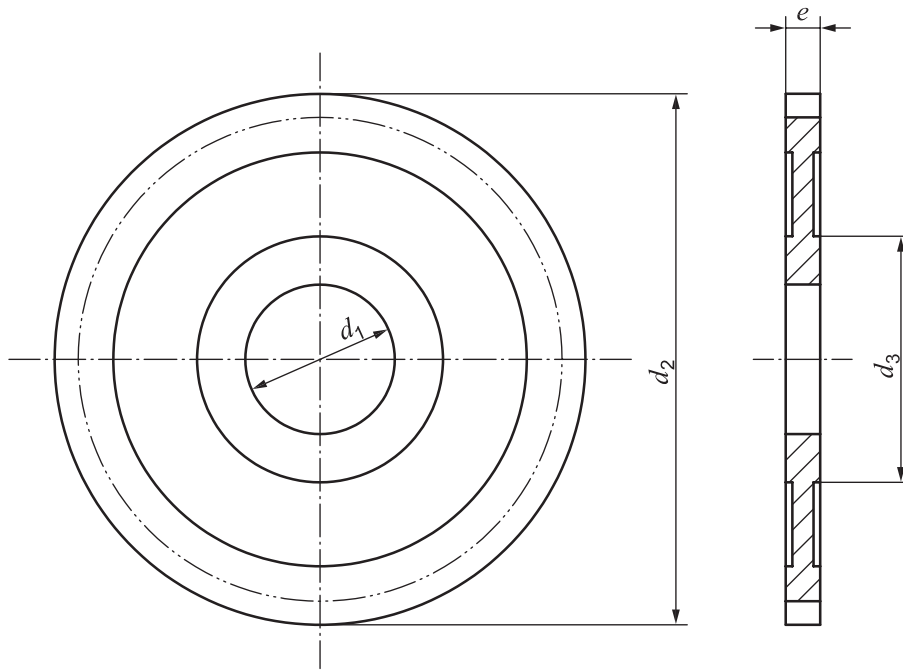


Figure 1 — Dimensions of metal slitting saws

Table 1 — Dimensions of metal slitting saws with fine teeth

Dimensions in millimetres

d_1 H7	5	8	10	13	16	22	32	40										
d_2 js16	20	25	32	40	50	63	80	100	125	160	200	250	315					
d_3 min.	Without hub					34	47	63	80									
e js11	Pitch ^a	Number of teeth																
0,2	±0,030	0,8	80			128												
0,25		1,0	64	80	100	128												
0,3					80	100	128											
0,4		1,25	48	64	80	100	128											
0,5					64	80	100	128	160									
0,6		1,6	40	48	64	80	100	128	160									
0,8					48	64	80	100	128	160								
1,0		2,0	32	40	48	64	80	100	128	160								
1,2					40	48	64	80	100	128	160	200						
1,6		2,5																
2,0																		
2,5		±0,037	2,5															
3,0																		
4,0																		
5,0																		
6,0																		
				3,2		4,0		5,0		6,3								

a The tooth pitch, in relation to the number of teeth of a metal slitting saw of a given diameter, is expressed as an approximate rounded value.