

# SVENSK STANDARD

## SS-EN 1005-2+A1:2008

Fastställt/Approved: 2008-10-16

Publicerad/Published: 2008-12-01

Utgåva/Edition: 1

Språk/Language: engelska/English

ICS: 13.110; 13.180; 14.040

---

### **Maskinsäkerhet – Människans fysiska förmåga – Del 2: Manuell hantering av maskiner och maskindelar**

### **Safety of machinery – Human physical performance – Part 2: Manual handling of machinery and component parts of machinery**

This preview is downloaded from [www.sis.se](http://www.sis.se). Buy the entire standard via <https://www.sis.se/std-67732>



SWEDISH  
STANDARDS  
INSTITUTE

# Hitta rätt produkt och ett leveranssätt som passar dig

## Standarder

Genom att följa gällande standard både effektiviserar och säkrar du ditt arbete. Många standarder ingår dessutom ofta i paket.

## Tjänster

Abonnemang är tjänsten där vi uppdaterar dig med aktuella standarder när förändringar sker på dem du valt att abonnera på. På så sätt är du säker på att du alltid arbetar efter rätt utgåva.

e-nav är vår online-tjänst som ger dig och dina kollegor tillgång till standarder ni valt att abonnera på dygnet runt. Med e-nav kan samma standard användas av flera personer samtidigt.

## Leveranssätt

Du väljer hur du vill ha dina standarder levererade. Vi kan erbjuda dig dem på papper och som pdf.

## Andra produkter

Vi har böcker som underlättar arbetet att följa en standard. Med våra böcker får du ökad förståelse för hur standarder ska följas och vilka fördelar den ger dig i ditt arbete. Vi tar fram många egna publikationer och fungerar även som återförsäljare. Det gör att du hos oss kan hitta över 500 unika titlar. Vi har även tekniska rapporter, specifikationer och "workshop agreement".

Matriser är en översikt på standarder och handböcker som bör läsas tillsammans. De finns på [sis.se](http://sis.se) och ger dig en bra bild över hur olika produkter hör ihop.

## Standardiseringsprojekt

Du kan påverka innehållet i framtida standarder genom att delta i någon av SIS ca 400 Tekniska Kommittéer.

# Find the right product and the type of delivery that suits you

## Standards

By complying with current standards, you can make your work more efficient and ensure reliability. Also, several of the standards are often supplied in packages.

## Services

Subscription is the service that keeps you up to date with current standards when changes occur in the ones you have chosen to subscribe to. This ensures that you are always working with the right edition.

e-nav is our online service that gives you and your colleagues access to the standards you subscribe to 24 hours a day. With e-nav, the same standards can be used by several people at once.

## Type of delivery

You choose how you want your standards delivered. We can supply them both on paper and as PDF files.

## Other products

We have books that facilitate standards compliance. They make it easier to understand how compliance works and how this benefits you in your operation. We produce many publications of our own, and also act as retailers. This means that we have more than 500 unique titles for you to choose from. We also have technical reports, specifications and workshop agreements.

Matrices, listed at [sis.se](http://sis.se), provide an overview of which publications belong together.

## Standardisation project

You can influence the content of future standards by taking part in one or other of SIS's 400 or so Technical Committees.

Europastandarden EN 1005-2:2003+A1:2008 gäller som svensk standard. Detta dokument innehåller den officiella engelska versionen av EN 1005-2:2003+A1:2008.

Denna standard ersätter SS-EN 1005-2, utgåva 1.

The European Standard EN 1005-2:2003+A1:2008 has the status of a Swedish Standard. This document contains the official English version of EN 1005-2:2003+A1:2008.

This standard supersedes the Swedish Standard SS-EN 1005-2, edition 1.

© Copyright/Upphovsrätten till denna produkt tillhör SIS, Swedish Standards Institute, Stockholm, Sverige. Användningen av denna produkt regleras av slutanvändarlicensen som återfinns i denna produkt, se standardens sista sidor.

© Copyright SIS, Swedish Standards Institute, Stockholm, Sweden. All rights reserved. The use of this product is governed by the end-user licence for this product. You will find the licence in the end of this document.

Upplysningar om sakinnehållet i standarden lämnas av SIS, Swedish Standards Institute, telefon 08-555 520 00.

Standarder kan beställas hos SIS Förlag AB som även lämnar allmänna upplysningar om svensk och utländsk standard.

Information about the content of the standard is available from the Swedish Standards Institute (SIS), tel +46 8 555 520 00.

Standards may be ordered from SIS Förlag AB, who can also provide general information about Swedish and foreign standards.

SIS Förlag AB, SE 118 80 Stockholm, Sweden. Tel: +46 8 555 523 10. Fax: +46 8 555 523 11.

E-mail: [sis.sales@sis.se](mailto:sis.sales@sis.se) Internet: [www.sis.se](http://www.sis.se)



EUROPEAN STANDARD

**EN 1005-2:2003+A1**

NORME EUROPÉENNE

EUROPÄISCHE NORM

October 2008

ICS 13.110; 13.180

Supersedes EN 1005-2:2003

English Version

**Safety of machinery - Human physical performance - Part 2:  
Manual handling of machinery and component parts of  
machinery**

Sécurité des machines - Performance physique humaine -  
Partie 2: Manutention manuelle de machines et d'éléments  
de machines

Sicherheit von Maschinen - Menschliche körperliche  
Leistung - Teil 2: Manuelle Handhabung von Gegenständen  
in Verbindung mit Maschinen und Maschinenteilen

This European Standard was approved by CEN on 13 February 2003 and includes Amendment 1 approved by CEN on 18 August 2008.

CEN members are bound to comply with the CEN/CENELEC Internal Regulations which stipulate the conditions for giving this European Standard the status of a national standard without any alteration. Up-to-date lists and bibliographical references concerning such national standards may be obtained on application to the CEN Management Centre or to any CEN member.

This European Standard exists in three official versions (English, French, German). A version in any other language made by translation under the responsibility of a CEN member into its own language and notified to the CEN Management Centre has the same status as the official versions.

CEN members are the national standards bodies of Austria, Belgium, Bulgaria, Cyprus, Czech Republic, Denmark, Estonia, Finland, France, Germany, Greece, Hungary, Iceland, Ireland, Italy, Latvia, Lithuania, Luxembourg, Malta, Netherlands, Norway, Poland, Portugal, Romania, Slovakia, Slovenia, Spain, Sweden, Switzerland and United Kingdom.



EUROPEAN COMMITTEE FOR STANDARDIZATION  
COMITÉ EUROPÉEN DE NORMALISATION  
EUROPÄISCHES KOMITEE FÜR NORMUNG

**Management Centre: rue de Stassart, 36 B-1050 Brussels**

## Contents

	page
Foreword.....	3
Introduction .....	4
1 Scope .....	5
2 Normative references .....	5
3 Terms and definitions .....	5
4 Recommendations for the design of machinery and component parts where objects are lifted, lowered and carried.....	5
4.1 General principles .....	5
4.2 Recommendations for the design of machinery .....	6
4.2.1 Systems without manual handling .....	6
4.2.2 Manual handling with technical aids .....	6
4.3 Risk assessment and recommendations for the design of machinery and component parts involving manual handling .....	6
4.3.1 Approach to risk assessment.....	6
4.3.2 Hazard identification, risk estimation, risk evaluation and recommendations for risk reduction by design .....	7
4.3.3 Risk assessment model .....	9
4.4 Information for use .....	16
Annex A (informative) Populations characteristics and system design .....	18
A.1 Population characteristics .....	18
A.2 System design .....	18
A.2.1 Avoid constrained postures .....	18
A.2.2 Acceleration and movement accuracy .....	18
A.2.3 Minimise the discomfort, fatigue and stress on the operator.....	19
Annex B (informative) Recommended thermal comfort requirements.....	20
Annex C (informative) Risk assessment worksheets .....	21
Annex ZA (informative) <b>ZA</b> Relationship between this European Standard and the Essential Requirements of EU Directive 98/37/EC, amended by 98/79/EC <b>ZA</b> .....	27
Annex ZB (informative) <b>ZB</b> Relationship between this European Standard and the Essential Requirements of EU Directive 2006/42/EC <b>ZB</b> .....	28
Bibliography .....	29

## Foreword

This document (EN 1005-2:2003+A1:2008) has been prepared by Technical Committee CEN/TC 122, "Ergonomics", the secretariat of which is held by DIN.

This European Standard shall be given the status of a national standard, either by publication of an identical text or by endorsement, at the latest by April 2009, and conflicting national standards shall be withdrawn at the latest by December 2009.

This document includes Amendment 1, approved by CEN on 2008-08-18.

This document supersedes EN 1005-2:2003.

The start and finish of text introduced or altered by amendment is indicated in the text by tags  $\square_{A1}$   $\square_{A1}$ .

This document has been prepared under a mandate given to CEN by the European Commission and the European Free Trade Association and supports essential requirements of EU Directive(s).

$\square_{A1}$  For relationship with EU Directive(s), see informative Annexes ZA and ZB, which are integral parts of this document.  $\square_{A1}$

EN 1005 consists of the following parts, under the general title "Safety of machinery - Human physical performance":

- Part 1: Terms and definitions;
- Part 2: Manual handling of machinery and component parts of machinery;
- Part 3: Recommended force limits for machinery operation;
- Part 4<sup>1)</sup>: Evaluation of working postures and movements in relation to machinery;
- Part 5<sup>1)</sup>: Risk assessment for repetitive handling at high frequency.

Annexes A, B and C are for informative.

This document includes a Bibliography.

According to the CEN/CENELEC Internal Regulations, the national standards organizations of the following countries are bound to implement this European Standard: Austria, Belgium, Bulgaria, Cyprus, Czech Republic, Denmark, Estonia, Finland, France, Germany, Greece, Hungary, Iceland, Ireland, Italy, Latvia, Lithuania, Luxembourg, Malta, Netherlands, Norway, Poland, Portugal, Romania, Slovakia, Slovenia, Spain, Sweden, Switzerland and United Kingdom.

---

1) This European Standard is under preparation by CEN/TC 122/WG 4 "Biomechanics".

## SS-EN 1005-2+A1:2008 (E)

### Introduction

When designing and constructing machinery, the manufacturer should meet the essential requirements for safety and health set out in the Machinery Directive. The manufacturer should assess the hazards of the machine and consider these hazards related to the life cycle of the machine.

This European Standard is one of several ergonomic standards for the safety of machinery. EN 614-1 describes the principles to be applied by designers in order to accommodate ergonomic factors.

This standard has been prepared to be a harmonised standard in the sense of the Machinery Directive and associated EFTA regulations.

This European Standard is a type B standard as stated in EN 1070.

The provisions of this document can be supplemented or modified by a type C standard.

**NOTE** For machines which are covered by the scope of a type C standard and which have been designed and built according to the provisions of that standard, the provisions of that type C standard take precedence over the provisions of this type B standard.

Manual handling of loads can lead to a high risk of injury to the musculoskeletal system if the loads to be handled are too heavy, and/or handled at high frequencies for long durations and/or in awkward postures. Disorders of the musculoskeletal system are of a common occurrence throughout Europe. Manually applied effort is often required by operators working with machines for their intended purpose. Risks exist if the design of the machinery is not in accordance with ergonomic design principles. When designing and constructing machinery where manual handling is required, this standard provides relevant data for working posture, load, frequency and duration. The design criteria given in this standard can be used by the designer when making risk assessments.

This standard requires machinery designers to adopt a three stage approach to:

- a) avoid manual handling activities wherever possible;
- b) utilise technical aids;
- c) further reduce the inherent level of risk by optimising handling activities.

For machines and their component parts which cannot be moved or transported by hand, see 4.2 in EN 292-2:1991.



## **1 Scope**

This European Standard specifies ergonomic recommendations for the design of machinery involving manual handling of machinery and component parts of machinery, including tools linked to the machine, in professional and domestic applications.

This European Standard applies to the manual handling of machinery, component parts of machinery and objects processed by the machine (input/output) of 3 kg or more, for carrying less than 2 m. Objects of less than 3 kg are dealt with in prEN 1005-5<sup>1</sup>). The standard provides data for ergonomic design and risk assessment concerning lifting, lowering and carrying in relation to the assembly/erection, transport and commissioning (assembly, installation, adjustment), operation, fault finding, maintenance, setting, teaching or process changeover and decommissioning, disposal and dismantling of machinery.

This standard provides current data on the general population and certain sub-populations (clarified in annex A).

This part of the standard does not cover the holding of objects (without walking), pushing or pulling of objects, hand-held machines, or handling while seated.

This document is not applicable to specify the machinery which are manufactured before the date of publication of this document by CEN.

## **2 Normative references**

This European Standard incorporates by dated or undated reference, provisions from other publications. These normative references are cited at the appropriate places in the text, and the publications are listed hereafter. For dated references, subsequent amendments to or revisions of any of these publications apply to this European Standard only when incorporated in it by amendment or revision. For undated references the latest edition of the publication referred to applies (including amendments).

EN 292-2:1991, *Safety of machinery – Basic concepts, general principles for design – Part 2: Technical principles and specifications.*

EN 614-1, *Safety of machinery – Ergonomic design principles – Part 1: Terminology and general principles.*

EN 1005-1:2001, *Safety of machinery – Human physical performance – Part 1: Terms and definitions.*

EN 1050, *Safety of machinery – Principles for risk assessment.*

EN 1070:1998, *Safety of machinery – Terminology.*

## **3 Terms and definitions**

For the purposes of this European Standard, the terms and definitions given in EN 1005-1:2001 and EN 1070:1998 apply.

## **4 Recommendations for the design of machinery and component parts where objects are lifted, lowered and carried**

### **4.1 General principles**

In order to minimise the risks to the health and safety of the operator, when lifting, lowering and carrying the machine or component parts, the designer/manufacturer of the machine shall:

- a) establish whether or not a hazard exists when manual handling activities are performed in relation to the intended use of the machine. If a hazard exists, the risk assessment model should be applied. (see 4.3.1, 4.3.2 and 4.3.3);

## SS-EN 1005-2+A1:2008 (E)

- b) remove the hazard by excluding the need for manual handling activities (lifting, lowering and carrying) for the machinery or machinery-linked objects (see 4.2.1). If this is not possible, provide technical aids, additional to the system (see 4.2.2), and/or design/redesign the machinery and machinery-linked objects according to ergonomic principles (see 4.3);
- c) provide technical specifications and instructions so that machinery is used appropriately and in the intended manner covered by the risk assessment, technical specifications and instructions for use.

In all cases, the designer shall provide instructions concerning construction, transport and commissioning, use and decommissioning of the machinery (see 4.4) to prevent risks for safety and health.

Technical aids for manual handling should preferably be incorporated into the machinery design and the machine.

Health, safety and productivity are most likely to be optimised if an ergonomic approach is used in designing the system of work as a whole.

### 4.2 Recommendations for the design of machinery

#### 4.2.1 Systems without manual handling

The best way to eliminate manual handling risks is to remove the need to handle manually. In general, those designing new systems of work or installing new systems of machinery should consider introducing an integrated handling system that fully utilises powered handling, rather than a manual system.

#### 4.2.2 Manual handling with technical aids

Designers should ascertain whether suitable aids and equipment can be installed, particularly if the existing practice involves frequent manual handling of objects and manual handling of objects weighing more than the reference mass (see Table 1), or the precise movement of objects. Appropriate technical aids diminish or eliminate the risk of musculoskeletal injury but may induce risks, for example, by the need for maintenance work. They may also have implications for particular handling methods at subsequent points in the handling chain. Handling aids should be compatible with the rest of the work system, including layout and access routes. They should be effective for the full range of operational conditions likely to be encountered. In employing technical aids, more space could be required for access to allow appropriate working postures.

When designing systems including manual handling follow the recommendations given in 4.3.2.

When considering the limits for manually pushing and pulling of technical aids, reference should be made to EN 1005-3. When considering working postures, reference should be made to prEN 1005-4<sup>1</sup>).

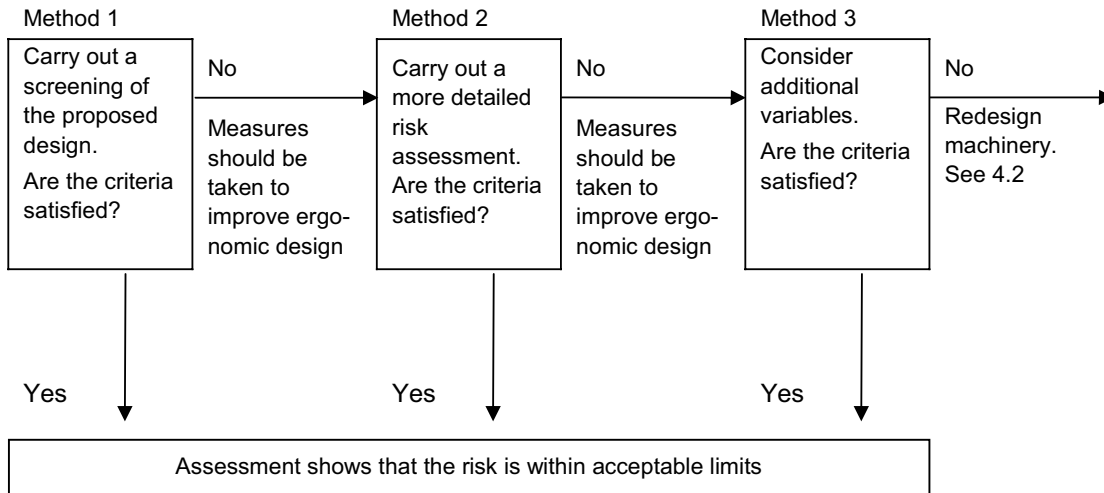
### 4.3 Risk assessment and recommendations for the design of machinery and component parts involving manual handling

#### 4.3.1 Approach to risk assessment

To control the risks to an individual's health and safety, it is necessary for the designer to identify relevant hazards and to carry out an appropriate risk assessment. For general requirements of risk assessment, refer to EN 1050. Manual handling risks shall be reduced by applying ergonomic principles at the design stage of the machinery, see EN 614-1.

The risk assessment model presented here involves 3 methods. These methods have the same basis, but differ in their complexity of application.

The first method is a quick screening method. Method 2, an easy to handle method, shall be applied if the screening method indicates risks. Some additional risk factors can be taken into account in method 2. Method 3 is an extended assessment method, which assesses risks in a more thorough way and is supplemented by additional risk factors not presented in methods 1 and 2. All three methods have different levels of complexity. The most efficient approach is to begin the risk assessment by applying method 1 (the most simple one) and use methods 2 and/or 3 only if the assumptions and/or operational situations identified in method 1 are not met.



NOTE It is recommended to consider further steps to reduce risk factors to their lowest possible level.

Figure 1 — Flowchart identifying the step-wise approach to assessment

#### 4.3.2 Hazard identification, risk estimation, risk evaluation and recommendations for risk reduction by design

In this paragraph recommendations for the design of a manual handling situation at a low risk level are given. The information is based on the state of the art of ergonomics. If these criteria are not met a risk assessment should be done.

The following aspects (see 4.3.2.1 to 4.3.2.3) shall be taken into account when assessing and reducing the risks.

##### 4.3.2.1 Objects

###### 4.3.2.1.1 Mass

The mass of the object (machines, machinery parts, input/output) includes everything connected with it such as packing, batteries, full magazines, etc. Technical aids needed for the manual handling activities are also included.

When designing machinery or components, the unit mass can be a hazard if an object is to be handled manually. To define the safe maximum limit for the mass refer to 4.3.3.

###### 4.3.2.1.2 Mass distribution/stability

The object's centre of gravity is determined by the distribution of mass. Wherever possible, the centre of gravity of the object should be within the object, distributed equally between both hands and positioned as close as possible to the body. While handling, movement of the object's centre of gravity should be constrained. When this is not possible (e.g. liquid), appropriate information should be marked on the object.

###### 4.3.2.1.3 Size

Objects should be designed to be as compact as possible. When objects are gripped by both hands, the width of the object should not exceed shoulder width (approximately 60 cm) and the depth of the object should not exceed 50 cm (recommended to be 35 cm or less) in order to keep the load close to the body. The height of the object should be such that it does not obscure a person's visibility. If handling of the object needs one hand underneath and one hand above the object, the object should be redesigned.