

SVENSK STANDARD

SS-ISO 8984-1:2007

Fastställt/Approved: 2007-12-05

Publicerad/Published: 2008-01-07

Utgåva/Edition: 2

Språk/Language: engelska/English

ICS: 43.180

Dieselmotorer – Provning av insprutare – Del 1: Manuell provnings- och inställningsapparat (ISO 8984-1:1993, IDT)

Diesel engines – Testing of fuel injectors – Part 1: Hand-lever-operated testing and setting apparatus (ISO 8984-1:1993, IDT)

This preview is downloaded from www.sis.se. Buy the entire standard via <https://www.sis.se/std-64245>

Hitta rätt produkt och ett leveranssätt som passar dig

Standarder

Genom att följa gällande standard både effektiviserar och säkrar du ditt arbete. Många standarder ingår dessutom ofta i paket.

Tjänster

Abonnemang är tjänsten där vi uppdaterar dig med aktuella standarder när förändringar sker på dem du valt att abonnera på. På så sätt är du säker på att du alltid arbetar efter rätt utgåva.

e-nav är vår online-tjänst som ger dig och dina kollegor tillgång till standarder ni valt att abonnera på dygnet runt. Med e-nav kan samma standard användas av flera personer samtidigt.

Leveranssätt

Du väljer hur du vill ha dina standarder levererade. Vi kan erbjuda dig dem på papper och som pdf.

Andra produkter

Vi har böcker som underlättar arbetet att följa en standard. Med våra böcker får du ökad förståelse för hur standarder ska följas och vilka fördelar den ger dig i ditt arbete. Vi tar fram många egna publikationer och fungerar även som återförsäljare. Det gör att du hos oss kan hitta över 500 unika titlar. Vi har även tekniska rapporter, specifikationer och "workshop agreement".

Matriser är en översikt på standarder och handböcker som bör läsas tillsammans. De finns på sis.se och ger dig en bra bild över hur olika produkter hör ihop.

Standardiseringsprojekt

Du kan påverka innehållet i framtida standarder genom att delta i någon av SIS ca 400 Tekniska Kommittéer.

Find the right product and the type of delivery that suits you

Standards

By complying with current standards, you can make your work more efficient and ensure reliability. Also, several of the standards are often supplied in packages.

Services

Subscription is the service that keeps you up to date with current standards when changes occur in the ones you have chosen to subscribe to. This ensures that you are always working with the right edition.

e-nav is our online service that gives you and your colleagues access to the standards you subscribe to 24 hours a day. With e-nav, the same standards can be used by several people at once.

Type of delivery

You choose how you want your standards delivered. We can supply them both on paper and as PDF files.

Other products

We have books that facilitate standards compliance. They make it easier to understand how compliance works and how this benefits you in your operation. We produce many publications of our own, and also act as retailers. This means that we have more than 500 unique titles for you to choose from. We also have technical reports, specifications and workshop agreements.

Matrices, listed at sis.se, provide an overview of which publications belong together.

Standardisation project

You can influence the content of future standards by taking part in one or other of SIS's 400 or so Technical Committees.

Den internationella standarden ISO 8984-1:1993 gäller som svensk standard. Detta dokument innehåller den officiella engelska versionen av ISO 8984-1:1993.

Denna standard ersätter SS-ISO 8984-1, utgåva 1.

The International Standard ISO 8984-1:1993 has the status of a Swedish Standard. This document contains the official English version of ISO 8984-1:1993.

This standard supersedes the Swedish Standard SS-ISO 8984-1, edition 1.

© Copyright/Upphovsrätten till denna produkt tillhör SIS, Swedish Standards Institute, Stockholm, Sverige. Användningen av denna produkt regleras av slutanvändarlicensen som återfinns i denna produkt, se standardens sista sidor.

© Copyright SIS, Swedish Standards Institute, Stockholm, Sweden. All rights reserved. The use of this product is governed by the end-user licence for this product. You will find the licence in the end of this document.

Upplysningar om sakinnehållet i standarden lämnas av SIS, Swedish Standards Institute, telefon 08-555 520 00.

Standarder kan beställas hos SIS Förlag AB som även lämnar allmänna upplysningar om svensk och utländsk standard.

Information about the content of the standard is available from the Swedish Standards Institute (SIS), tel +46 8 555 520 00.

Standards may be ordered from SIS Förlag AB, who can also provide general information about Swedish and foreign standards.

SIS Förlag AB, SE 118 80 Stockholm, Sweden. Tel: +46 8 555 523 10. Fax: +46 8 555 523 11.

E-mail: sis.sales@sis.se Internet: www.sis.se

SS-ISO 8984-1:2007 (E)

Foreword

ISO (the International Organization for Standardization) is a worldwide federation of national standards bodies (ISO member bodies). The work of preparing International Standards is normally carried out through ISO technical committees. Each member body interested in a subject for which a technical committee has been established has the right to be represented on that committee. International organizations, governmental and non-governmental, in liaison with ISO, also take part in the work. ISO collaborates closely with the International Electrotechnical Commission (IEC) on all matters of electrotechnical standardization.

Draft International Standards adopted by the technical committees are circulated to the member bodies for voting. Publication as an International Standard requires approval by at least 75 % of the member bodies casting a vote.

International Standard ISO 8984-1 was prepared by Technical Committee ISO/TC 22, *Road vehicles*, Subcommittee SC 7, *Injection equipment and filters for use on road vehicles*.

This second edition cancels and replaces the first edition (ISO 8984-1:1987), subclause 3.2.4 of which has been technically revised.

ISO 8984 consists of the following parts, under the general title *Diesel engines — Testing of fuel injectors*:

- *Part 1: Hand-lever-operated testing and setting apparatus*
- *Part 2: Test methods*

Annexes A and B of this part of ISO 8984 are for information only.

Introduction

An assessment of the functional performance of individual fuel injectors has proved necessary. A form of hand-lever-operated testing and/or setting equipment for injectors has evolved over the years; it has been found in principle effective and adequate to perform the test. Differences in certain physical values between equipment from different manufacturers and of different designs have however resulted in lack of correlation of results. This International Standard consists of two parts (apparatus and method respectively), which together specify the relevant requirements to establish common test conditions.

Diesel engines — Testing of fuel injectors —

Part 1:

Hand-lever-operated testing and setting apparatus

1 Scope

1.1 This part of ISO 8984 specifies minimum requirements for hand-lever-operated testing and setting apparatus to perform certain tests on fuel injectors for diesel (compression-ignition) engines. These tests are detailed in ISO 8984-2 and are

- nozzle opening pressure;
- chatter (atomization);
- spray pattern;
- seat leakage;
- back-leakage.

This International Standard concerns fuel injectors having a spring-loaded nozzle valve actuated by fuel pressure. It is intended that the specifications form a standard basis. The injector is connected to the apparatus by an adaptor specified by the injector manufacturer.

1.2 This part of ISO 8984 primarily applies to apparatus for testing the injectors of fuel injection equipment for diesel (compression-ignition) engines requiring fuel delivery of up to $300 \text{ mm}^3/(\text{injection} \times \text{cylinder})$ at full load.

1.3 No distinction is made between apparatus used in different locations, e.g. laboratories, factories or service stations.

1.4 It is up to the injector manufacturer to specify which tests are to be selected from those listed in 1.1, together with any additional requirements for a particular injector.

NOTE 1 The terms used in this part of ISO 8984 are in accordance with ISO 7876-2 [6].

2 Normative references

The following standards contain provisions which, through reference in this text, constitute provisions of this part of ISO 8984. At the time of publication, the editions indicated were valid. All standards are subject to revision, and parties to agreements based on this part of ISO 8984 are encouraged to investigate the possibility of applying the most recent editions of the standards indicated below. Members of IEC and ISO maintain registers of currently valid International Standards.

ISO 2974:1990, *Road vehicles — High-pressure fuel injection pipe end-connections with 60 degree female cone.*

ISO 4010:1977, *Road vehicles — Calibrating nozzle, delay pintle type.*

ISO 4020-1:1979, *Road vehicles — Fuel filters for automotive compression ignition engines — Part 1: Test methods.*

ISO 4113:1988, *Road vehicles — Calibration fluid for diesel injection equipment.*

ISO 8984-2:1993, *Road vehicles — Testing of fuel injectors — Part 2: Test methods.*

3 Mandatory features of equipment

3.1 Mandatory components

NOTE 2 Numbers given in parentheses relate to figure 1.

3.1.1 This part of ISO 8984 covers those components within the dashed line (1) in figure 1 which comprise

— Operating handle (2)

— Pump (3)

— Filter (4)

— Fluid container and lid (5)

— Non-return valve (6)

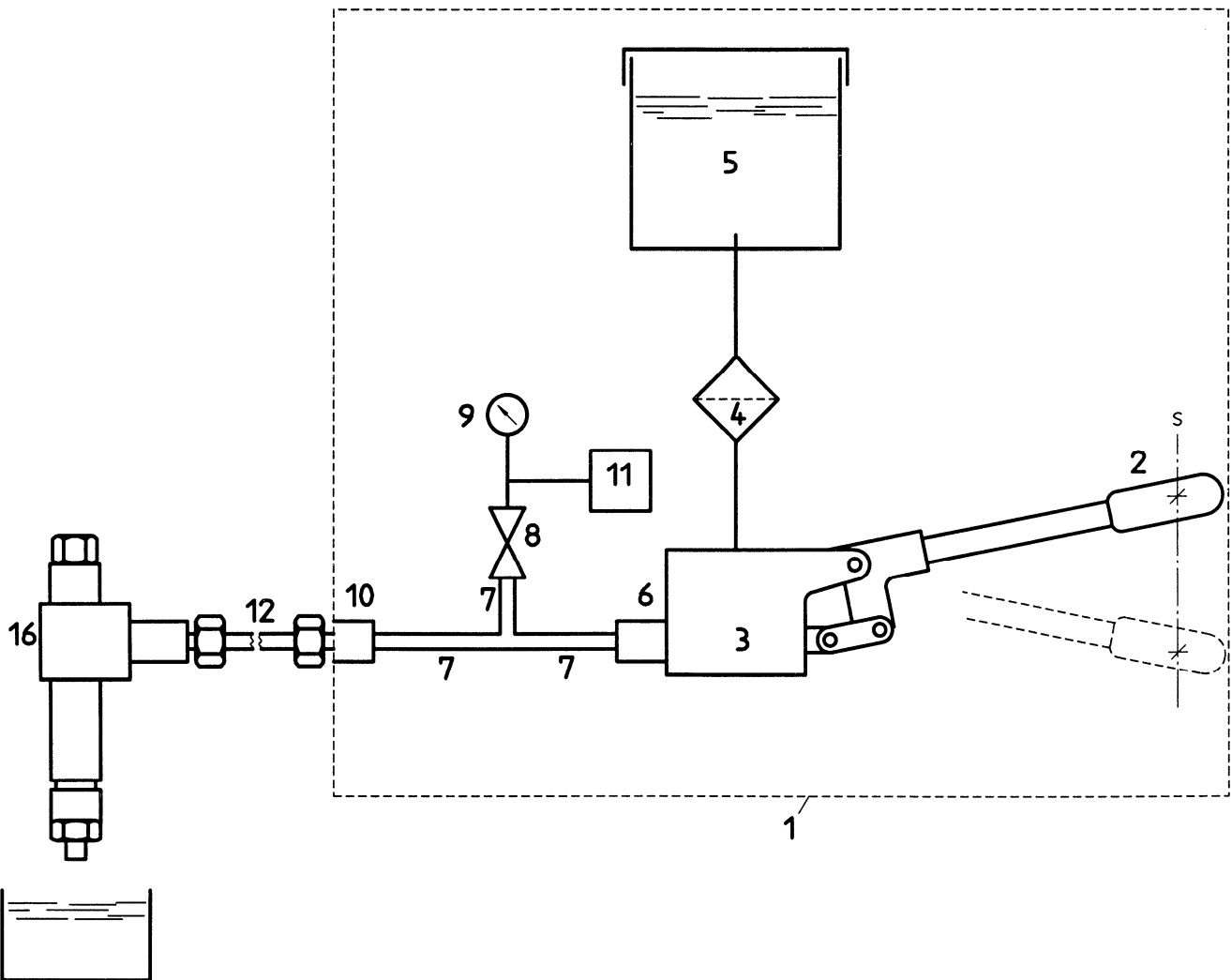
— Ducts (7)

— Isolating valve (8)

— Pressure gauge (9)

— Outlet connection (10)

— Variable volume device (11)



NOTE — Components (13), (14), (15) not illustrated (see 3.1.2).

Figure 1 — Mandatory components